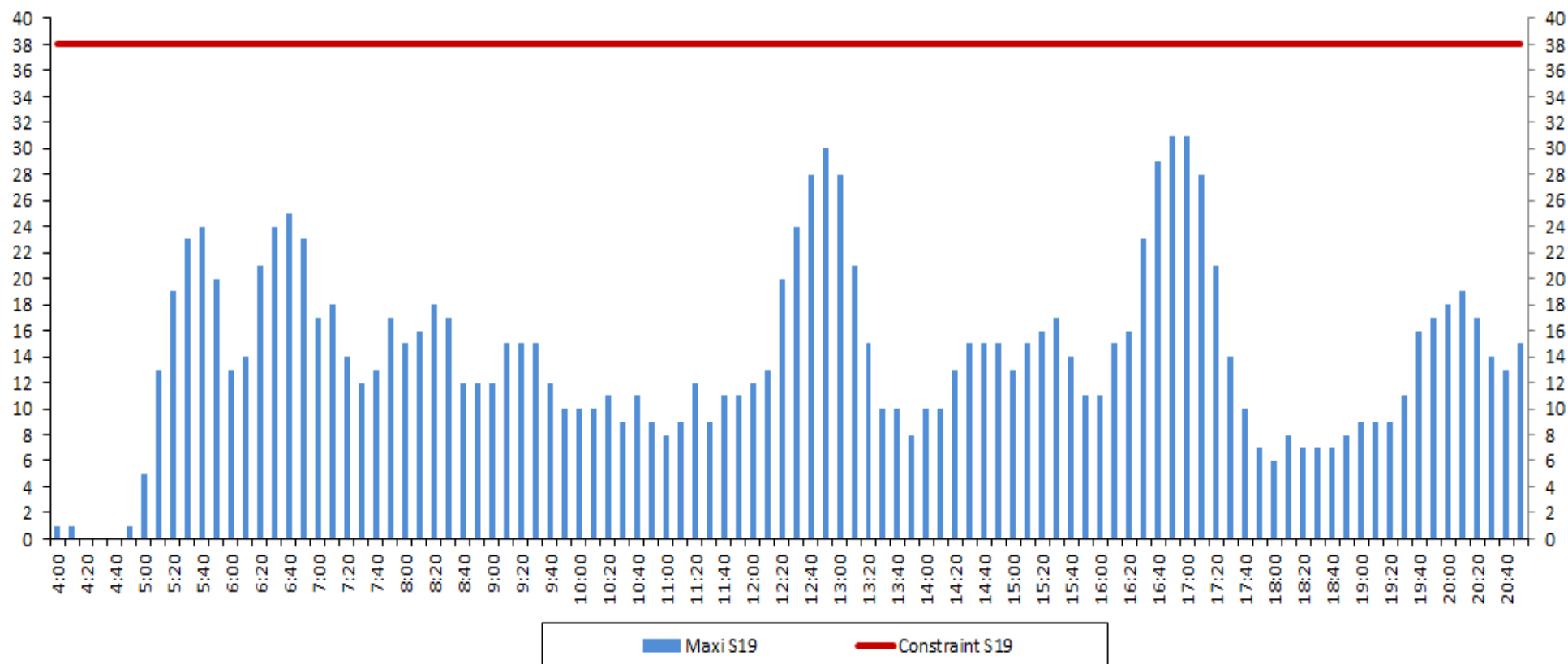


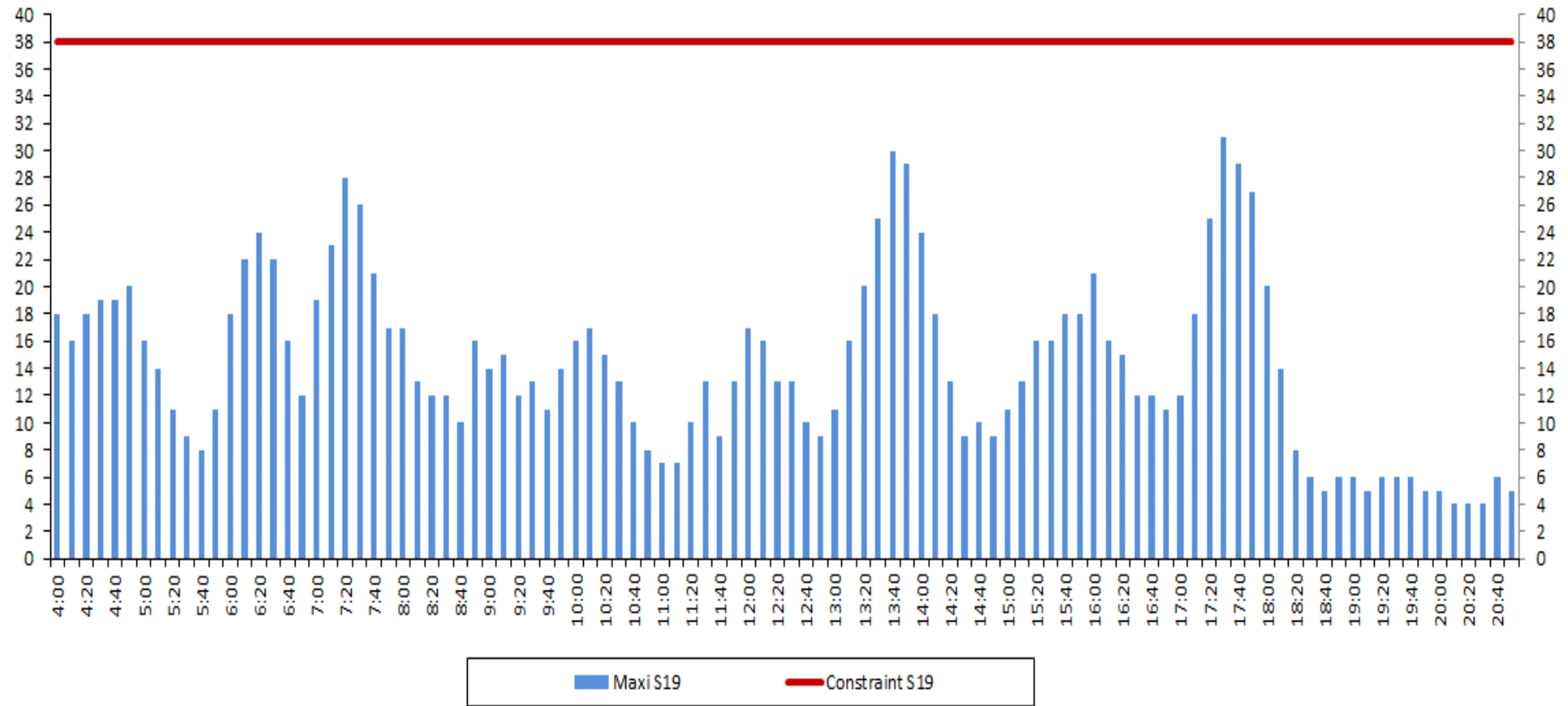
LYSS19 G60 Arrival: Slot Allocation [SAL]- Seasonal Maximum

Date 29 October 2018 - UTC Time (GMT+2:00, France)



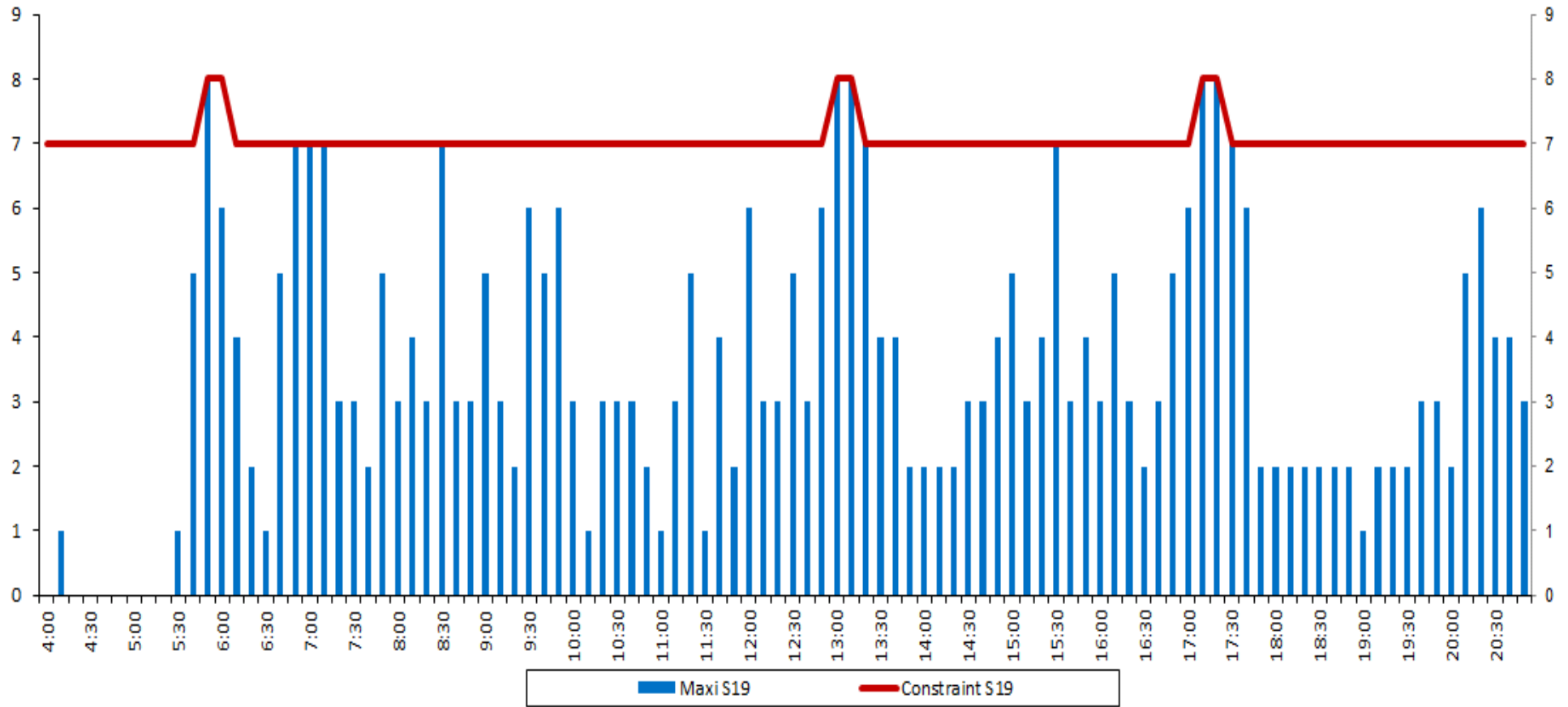
LYSS19 G60 Departure: Slot Allocation [SAL]- Seasonal Maximum

Date 29 October 2018 - UTC Time (GMT+2:00, France)



LYSS19 R10 Arrival: Slot Allocation [SAL]- Seasonal Maximum

Date 29 October 2018 - UTC Time (GMT+2:00, France)

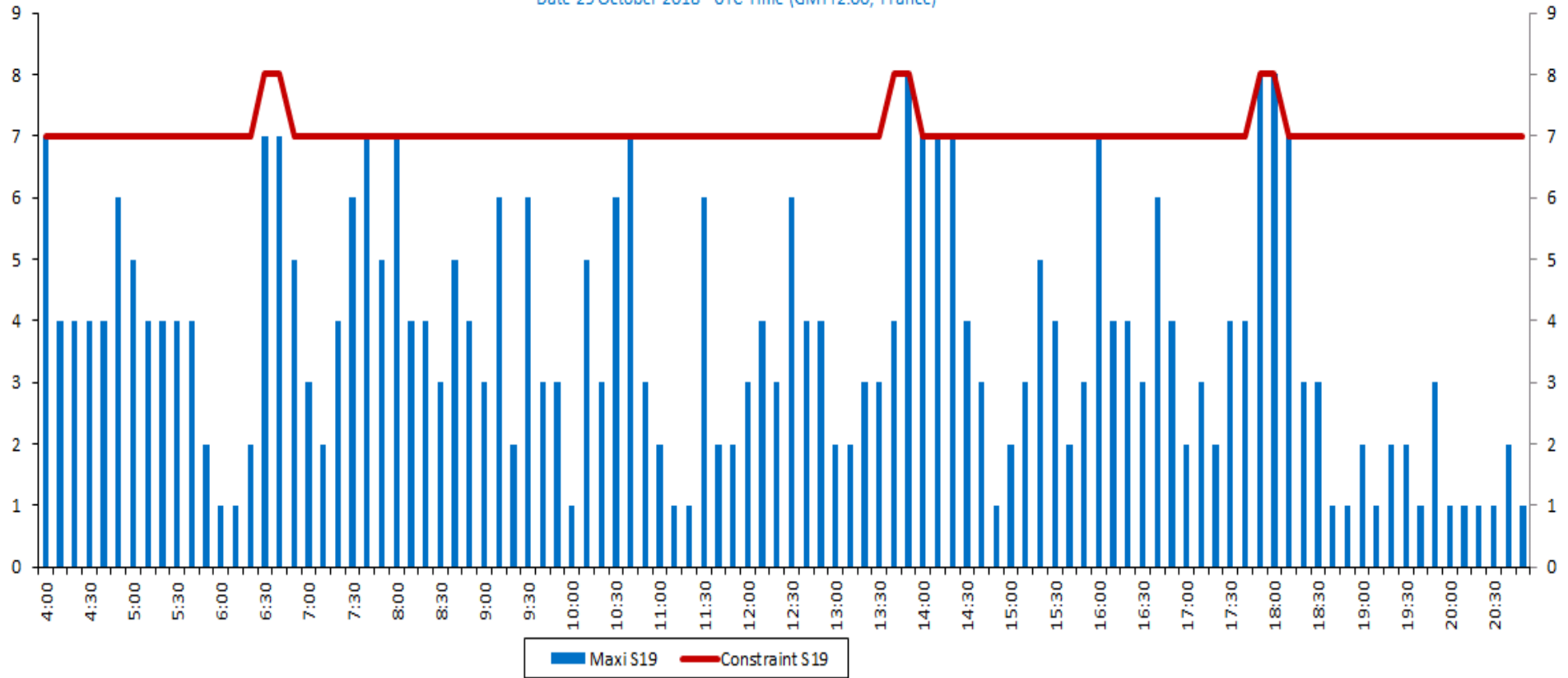




LYSS19 R10 Departure: Slot Allocation [SAL]- Seasonal Maximum

AIRPORT COORDINATION, FRANCE

Date 29 October 2018 - UTC Time (GMT+2:00, France)

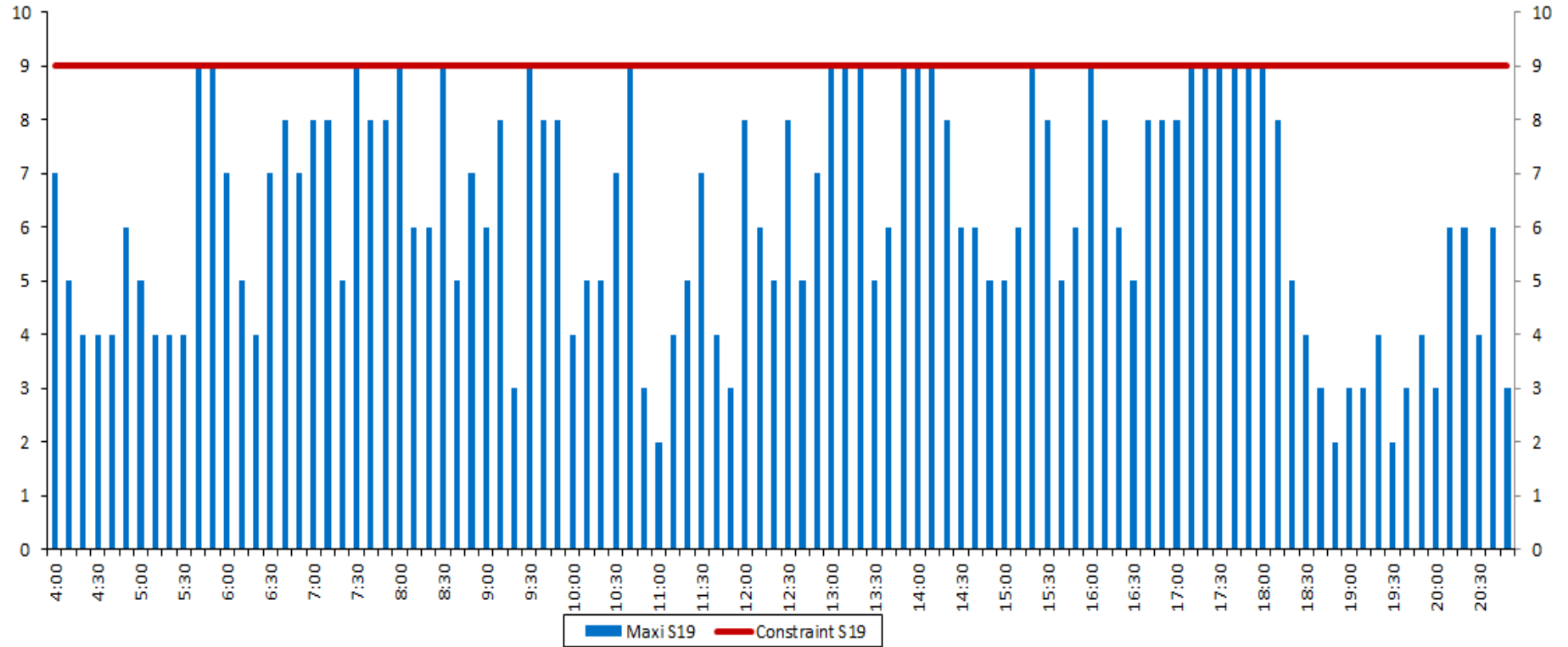




LYSS19 R10 Mixed: Slot Allocation [SAL]- Seasonal Maximum

Date 29 October 2018 - UTC Time (GMT+2:00, France)

AIRPORT COORDINATION, FRANCE

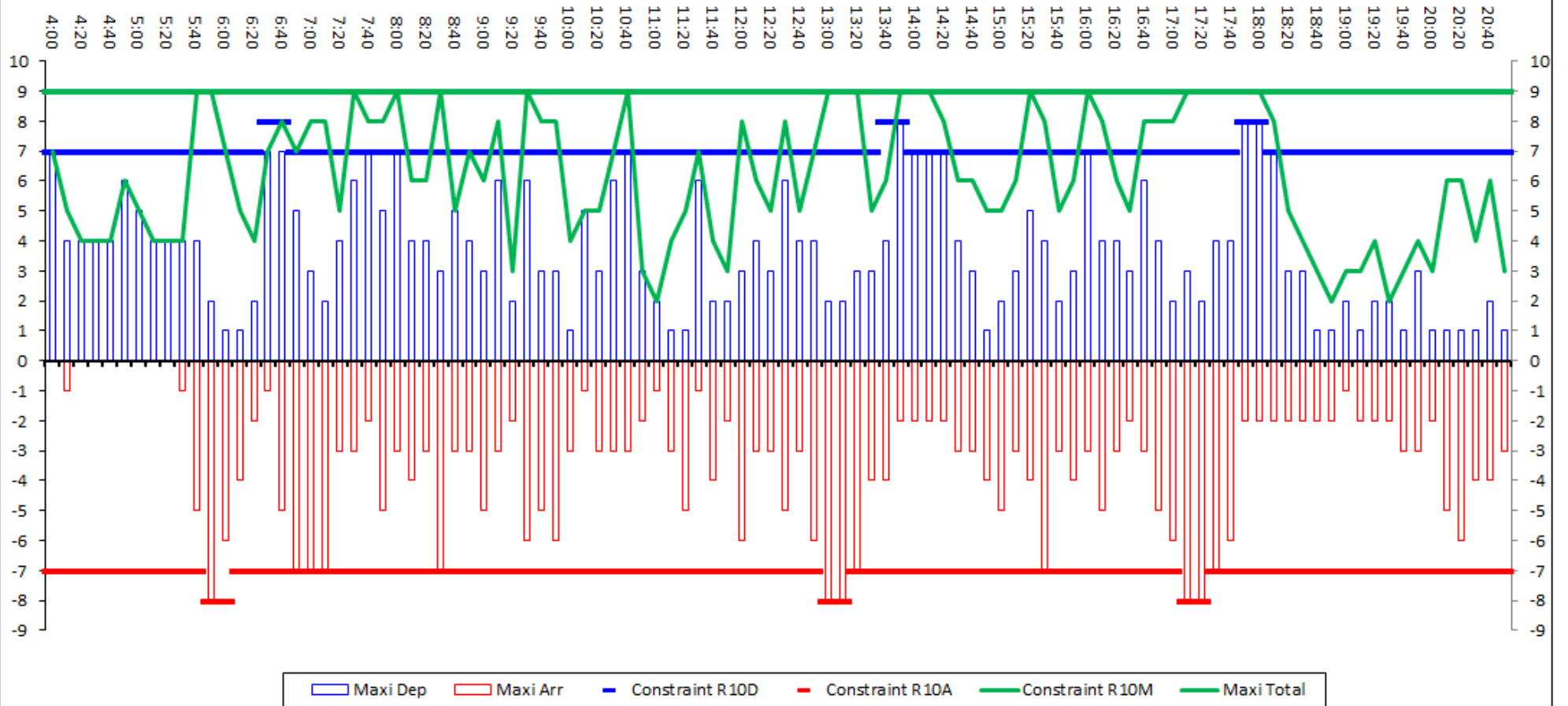




AIRPORT COORDINATION, FRANCE

LYSS19 R10A/D/M: Slot Allocation [SAL]- Seasonal Maximum

Date 29 October 2018 - UTC Time (GMT+2:00, France)

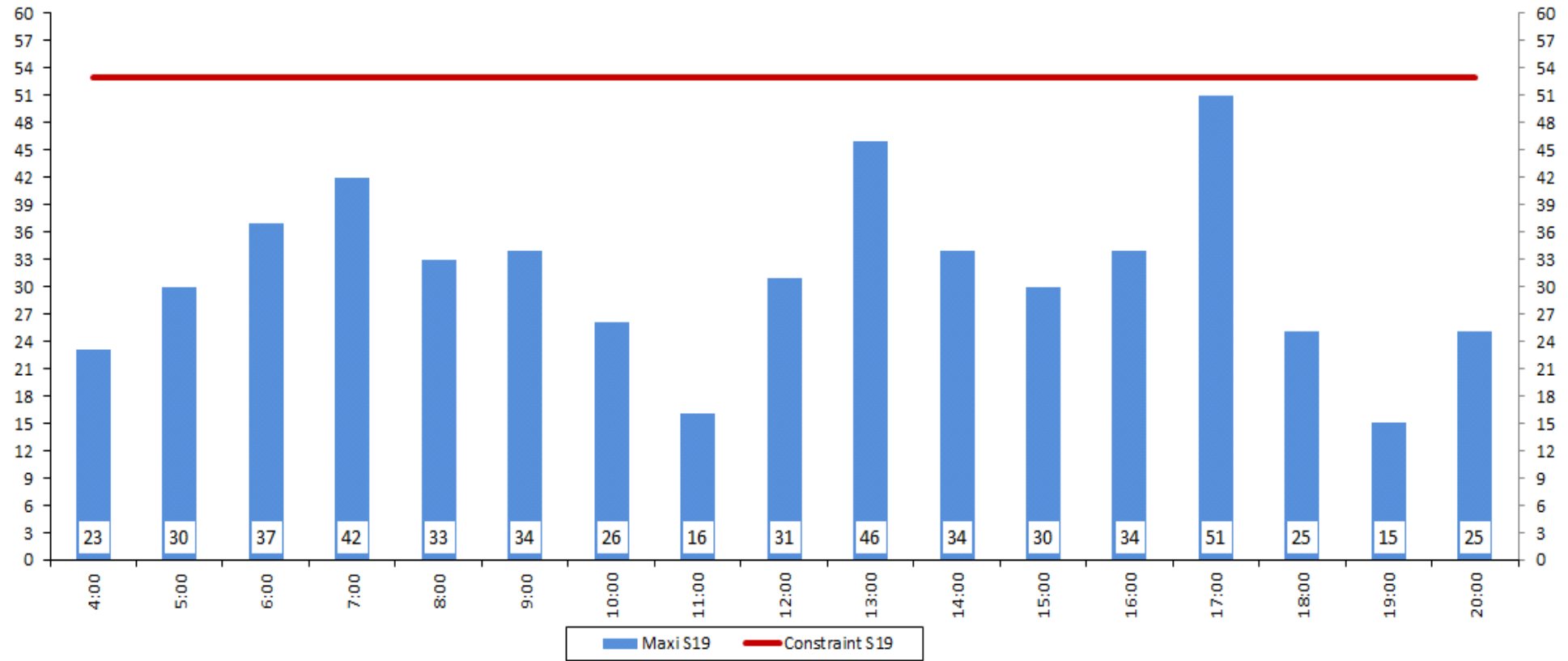




LYSS19 R60 Mixed: Slot Allocation [SAL]- Seasonal Maximum

Date 29 October 2018 - UTC Time (GMT+2:00, France)

AIRPORT COORDINATION, FRANCE

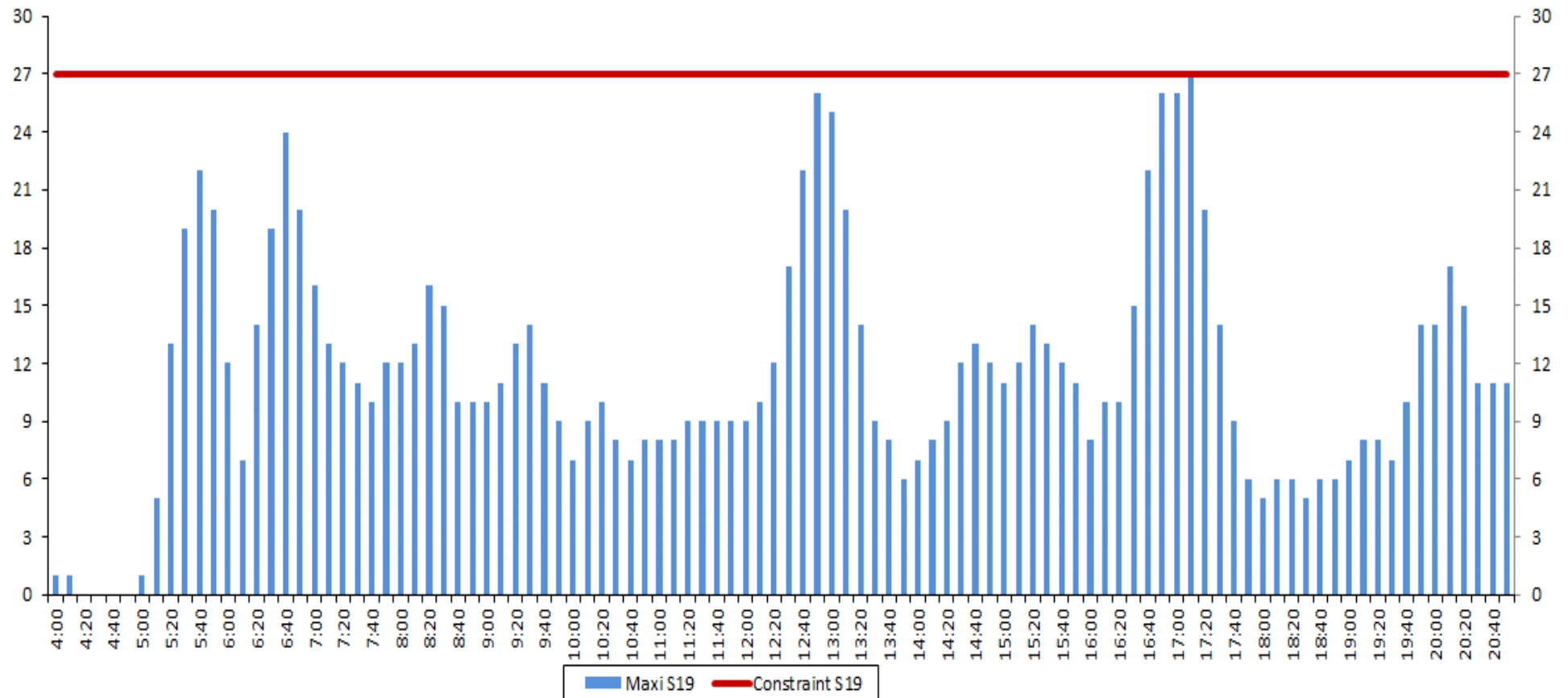




LYSS19 G40 Arrival: Slot Allocation [SAL]- Seasonal Maximum

Date 29 October 2018 - UTC Time (GMT+2:00, France)

AIRPORT COORDINATION, FRANCE





AIRPORT COORDINATION, FRANCE

LYSS19 G40 Departure: Slot Allocation [SAL]- Seasonal Maximum

Date 29 October 2018 - UTC Time (GMT+2:00, France)

