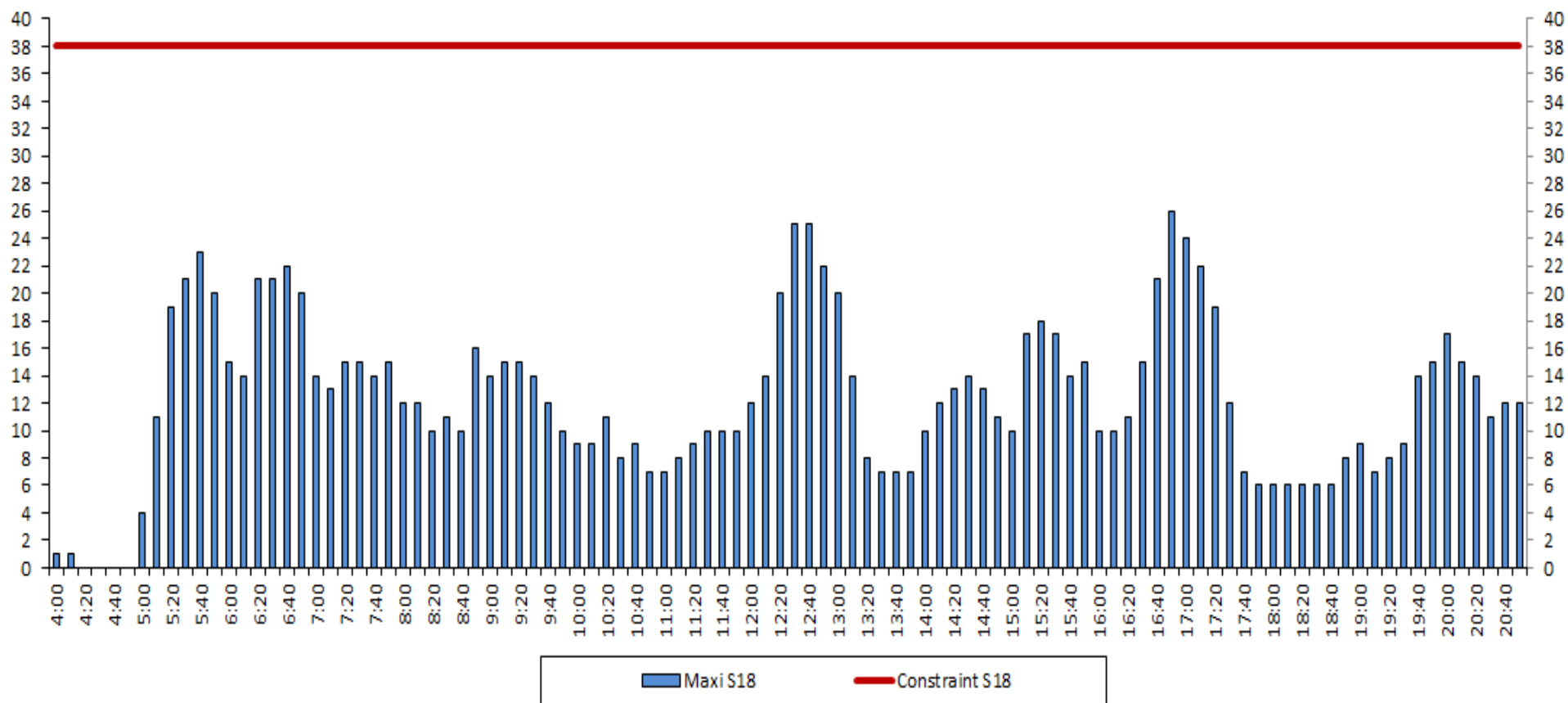




LYSS18 G60 Arrival: Slot Allocation List (SAL) - Seasonal Maximum

Last Edit Date 24 October 2017 - UTC Time (GMT+2:00, France)

AIRPORT COORDINATION, FRANCE

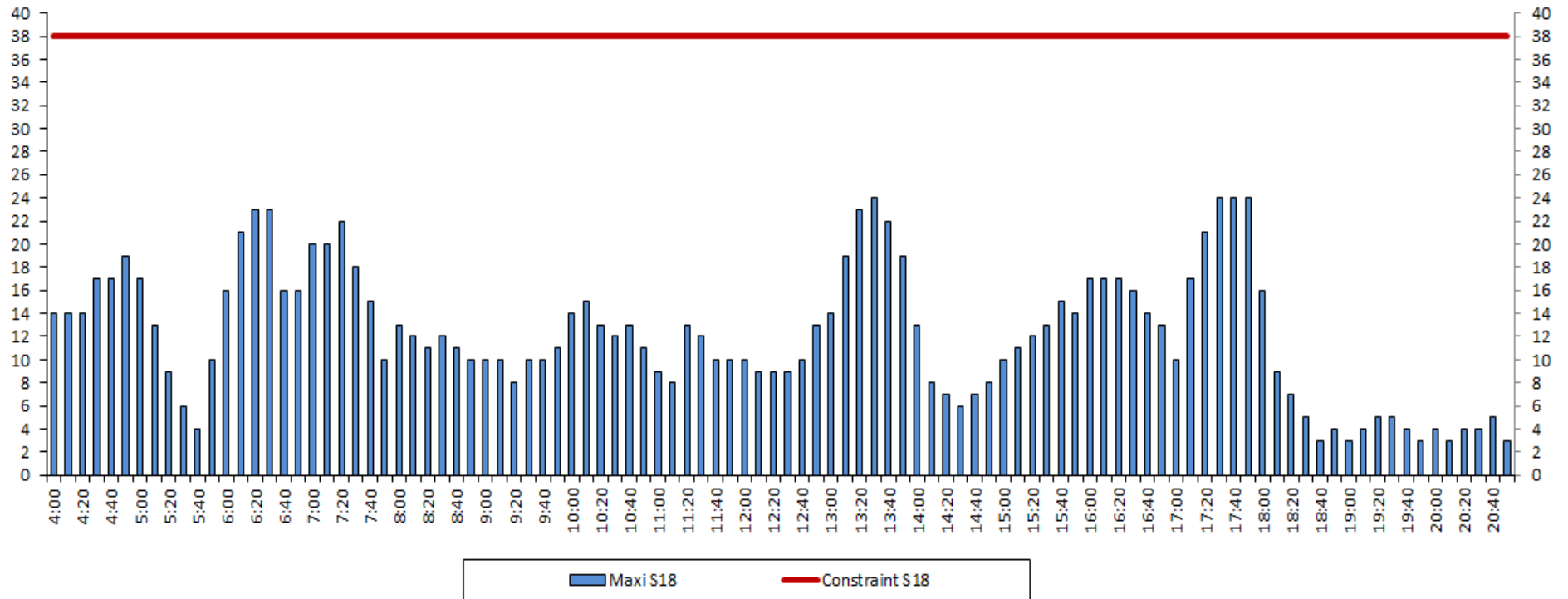




AIRPORT COORDINATION, FRANCE

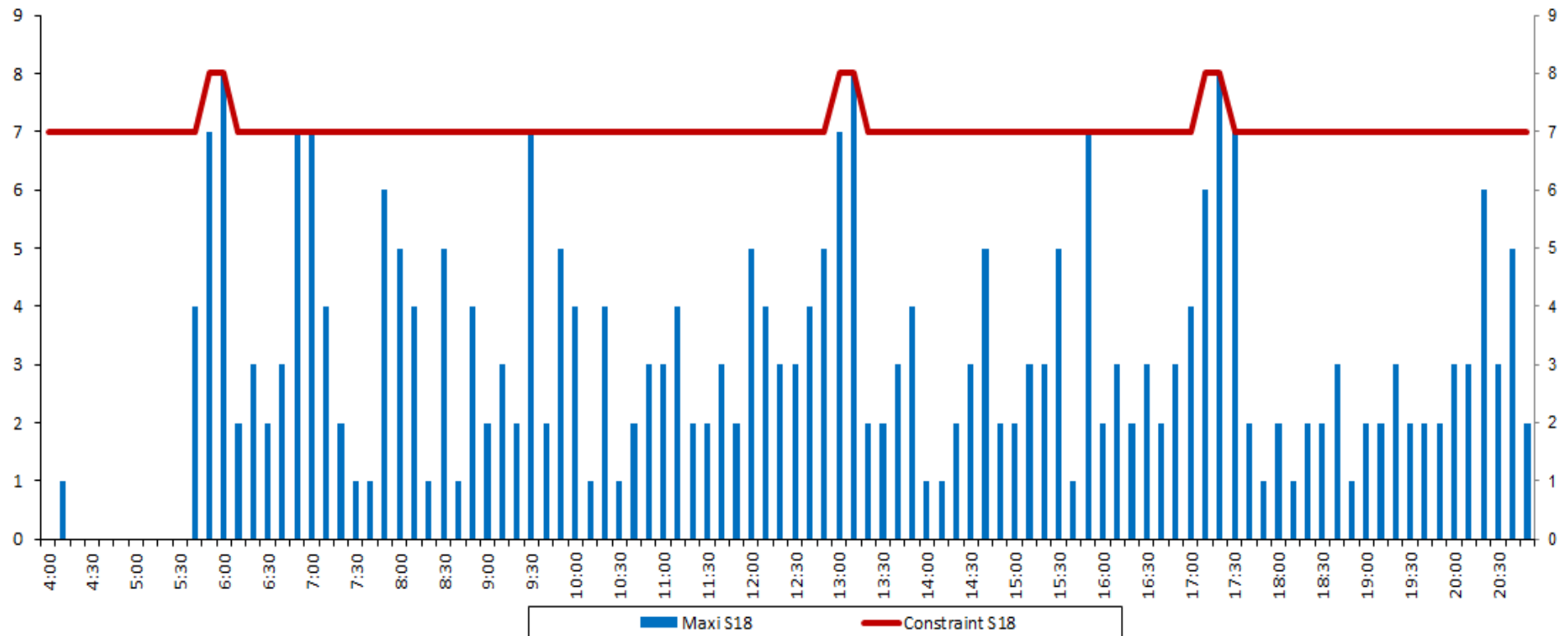
LYSS18 G60 Departure: Slot Allocation List (SAL) - Seasonal Maximum

Last Edit Date 10 October 2017 - UTC Time (GMT+2:00, France)



LYSS18 R10 Arrival: Slot Allocation List (SAL) - Seasonal Maximum

Last Edit Date 24 October 2017 - UTC Time (GMT+2:00, France)

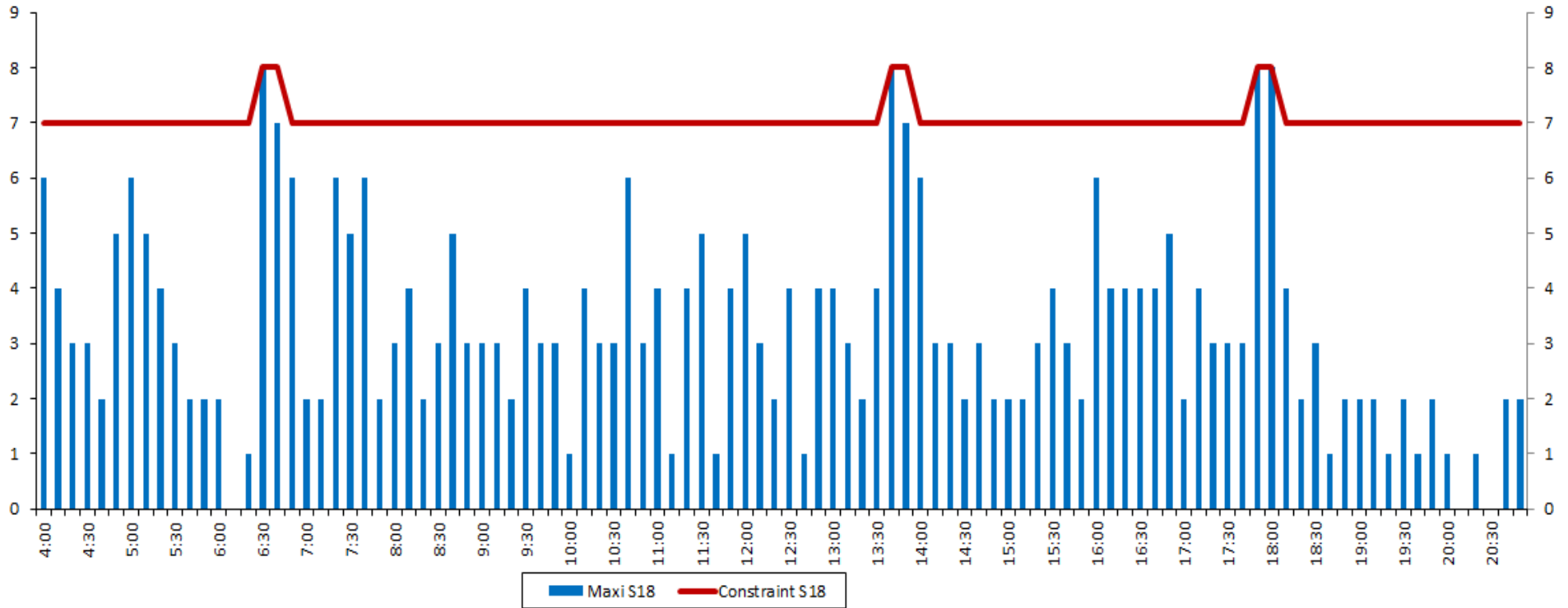




LYSS18 R10 Departure: Slot Allocation List (SAL) - Seasonal Maximum

Last Edit Date 24 October 2017 - UTC Time (GMT+2:00, France)

AIRPORT COORDINATION, FRANCE

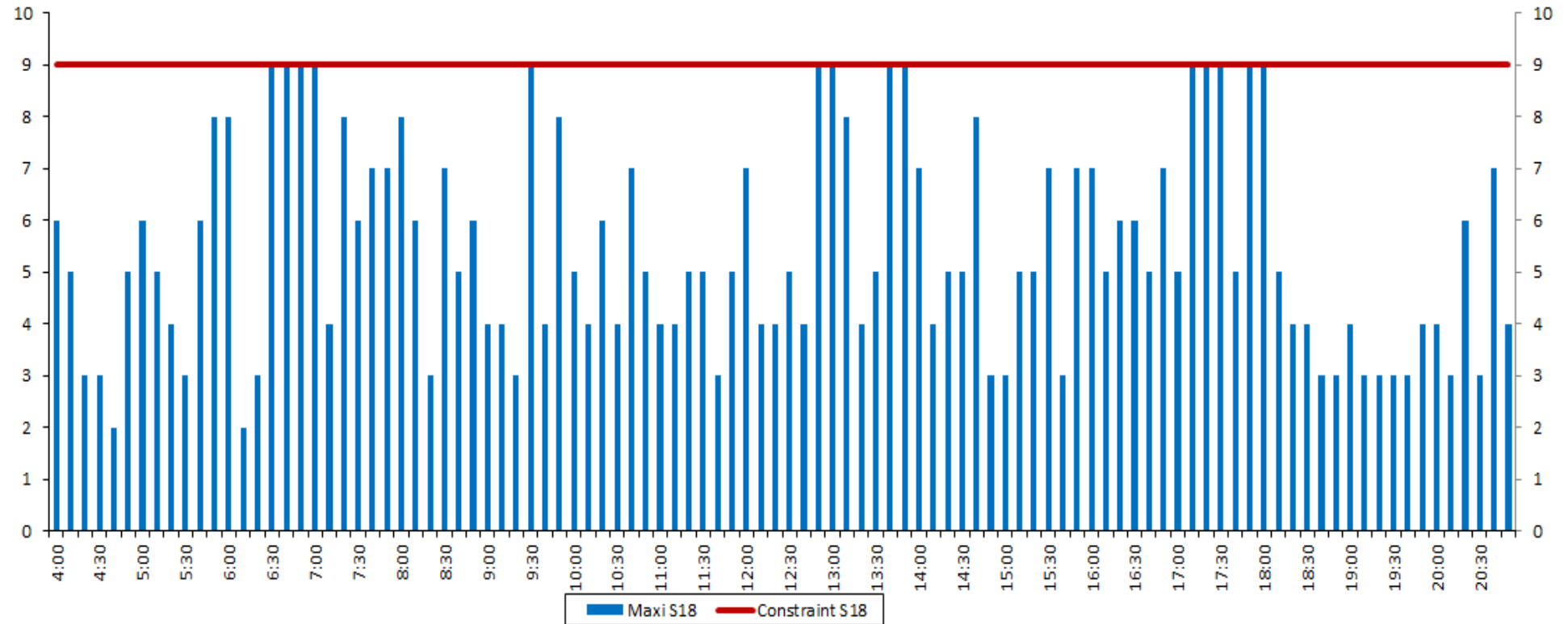




LYSS18 R10 Mixed: Slot Allocation List (SAL) - Seasonal Maximum

Last Edit Date 24 October 2017 - UTC Time (GMT+2:00, France)

AIRPORT COORDINATION, FRANCE

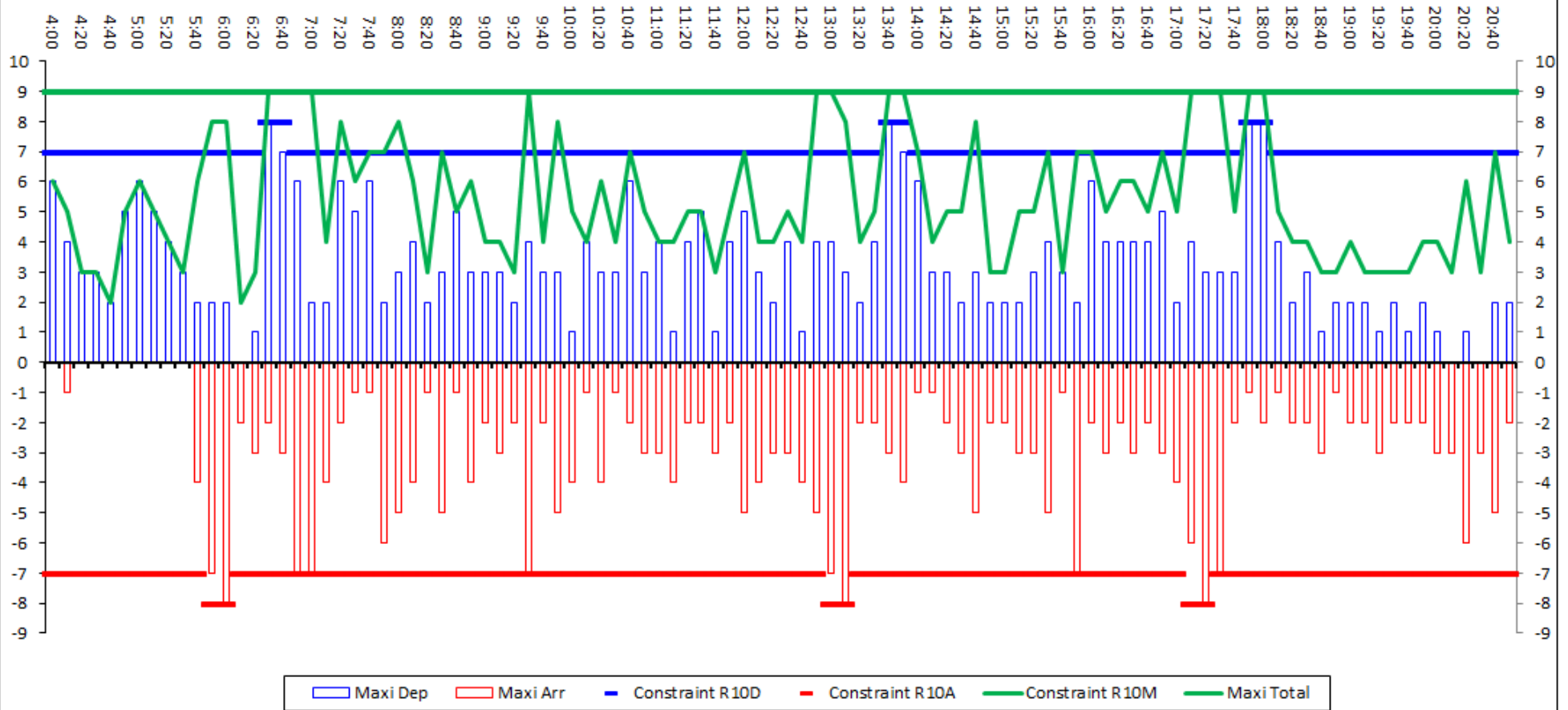




LYSS18 R10A/D/M: Slot Allocation List (SAL) - Seasonal Maximum

Last Edit Date 24 October 2017 - UTC Time (GMT+2:00, France)

AIRPORT COORDINATION, FRANCE

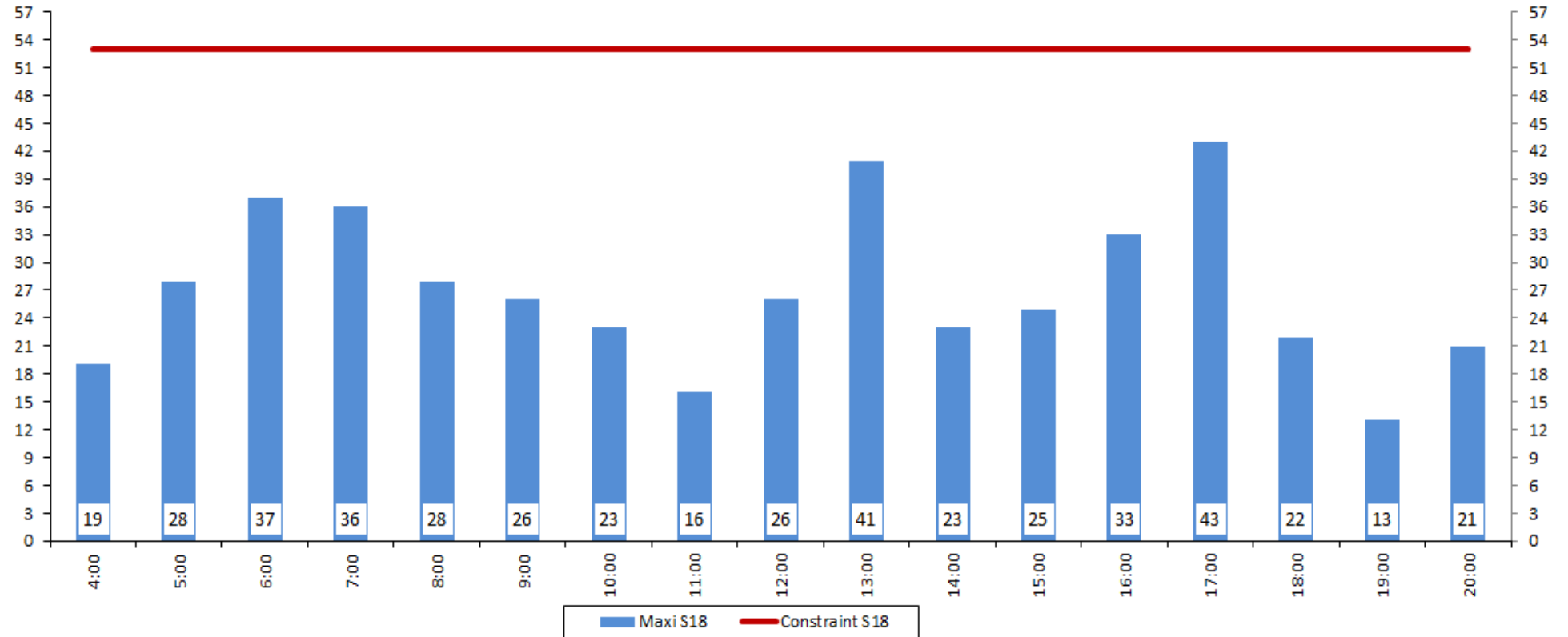




LYSS18 R60 Mixed: Slot Allocation List (SAL) - Seasonal Maximum

Last Edit Date 24 October 2017 - UTC Time (GMT+2:00, France)

AIRPORT COORDINATION, FRANCE

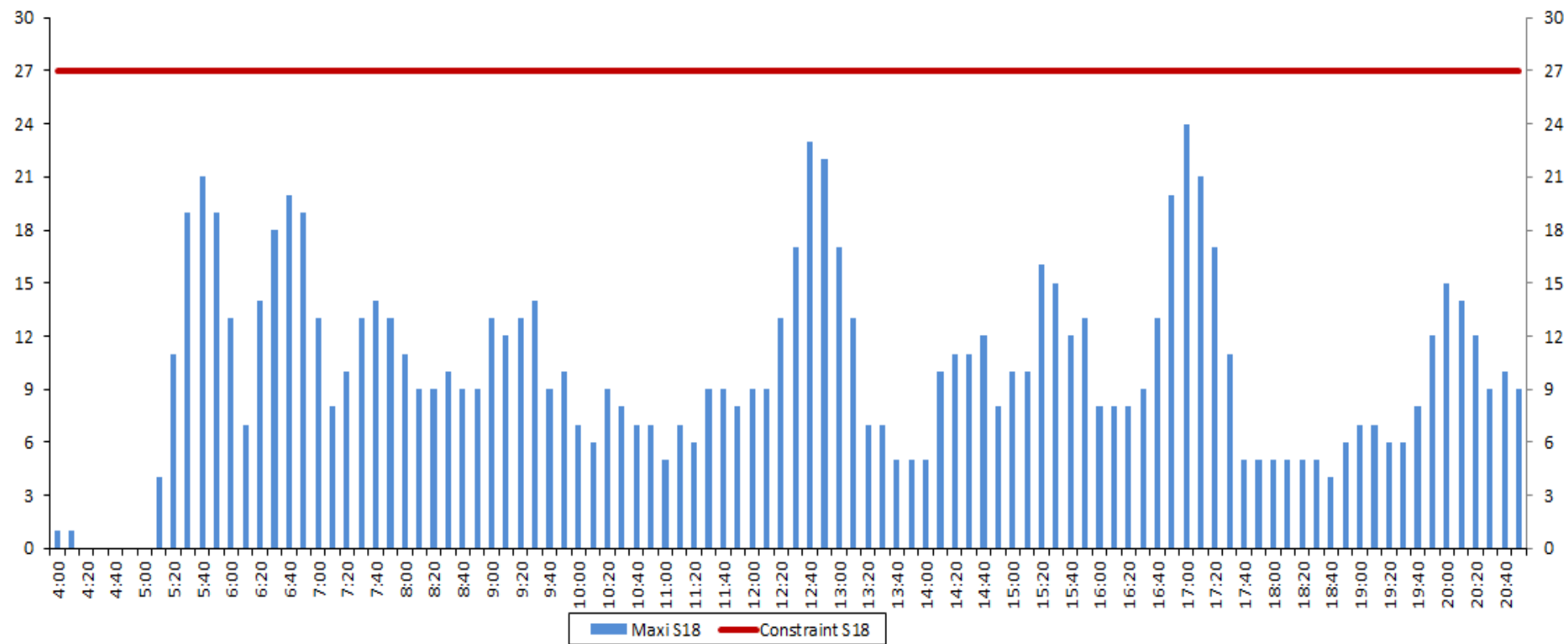




LYSS18 G40 Arrival: Slot Allocation List (SAL) - Seasonal Maximum

Last Edit Date 24 October 2017 - UTC Time (GMT+2:00, France)

AIRPORT COORDINATION, FRANCE





LYSS18 G40 Departure: Slot Allocation List (SAL) - Seasonal Maximum

Last Edit Date 24 October 2017 - UTC Time (GMT+2:00, France)

AIRPORT COORDINATION, FRANCE

