



AIRPORT COORDINATION, FRANCE

Paris - Charles de Gaulle Airport CDG/LFPG

Summer 2014 - Start Of Season Report

Report data extraction date: Monday 31 March 2014

Last modification made on:

Table of contents

Evolution of allocated slots at the Start Of Season (SOS)	2
Total slots by operator – TOP15	2
Slots distribution per alliance.....	4
Size of aircraft.....	5
Allocated slots by destination	6
Geographical distribution of allocated slots	8
Slots distribution by service type	8
CDG – S14 - Airport Coordination Parameters	9
Initial demand	11
SOS Allocated slots	13
Slots allocation by operator.....	15

The contents of this report may not be reproduced without the written consent of COHOR.

Evolution of allocated slots at the Start Of Season (SOS)

Summer 2014 (30 weeks): 294 933 Allocated Slots

Summer 2013 (30 weeks): 293 055 Allocated Slots

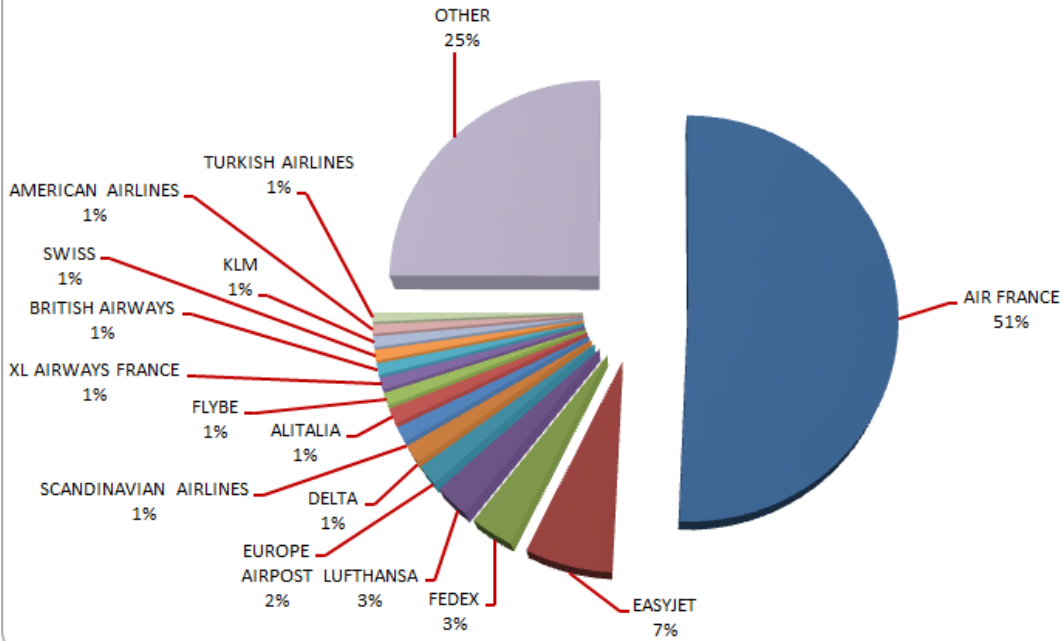
Allocated slots at SOS increased by **0,64%** from S13 to S14 (on average per week).

Total slots by operator – TOP15

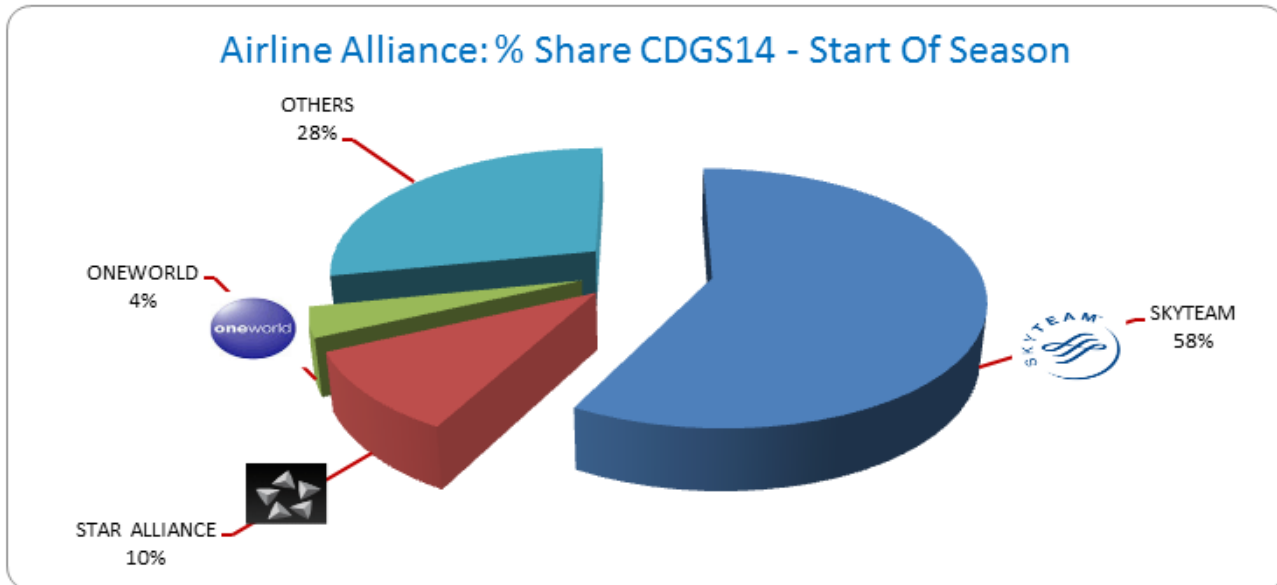
Airline	S13	%SHARE S13	S14	%SHARE S14	%CHANGE (on average per week)
AIR FRANCE	151 175	51,59%	149 715	50,76%	-0,97%
EASYJET AIRLINE	18 688	6,38%	19 227	6,52%	2,88%
FEDEX EXPRESS	10 463	3,57%	9 680	3,28%	-7,48%
LUFTHANSA	9 945	3,39%	8 075	2,74%	-18,80%
EUROPE AIRPOST	5 659	1,93%	4 872	1,65%	-13,91%
DELTA AIR LINES	4 245	1,45%	4 423	1,50%	4,19%
SCANDINAVIAN AIRLINES	3 968	1,35%	3 706	1,26%	-6,60%
ALITALIA	3 665	1,25%	3 660	1,24%	-0,14%
FLYBE	3 069	1,05%	3 012	1,02%	-1,86%
XL AIRWAYS FRANCE	2 882	0,98%	2 802	0,95%	-2,78%
BRITISH AIRWAYS	2 760	0,94%	2 684	0,91%	-2,75%
SWISS INTERNATIONAL AIRLINES	2 508	0,86%	2 518	0,85%	0,40%
KLM	2 520	0,86%	2 516	0,85%	-0,16%
AMERICAN AIRLINES	2 372	0,81%	2 237	0,76%	-5,69%
THY TURKISH AIRLINES	2 098	0,72%	2 192	0,74%	4,48%
OTHER	67 037	22,88%	73 614	24,96%	9,81%
GRAND TOTAL	293 054	100,00%	294 933	100,00%	0,64%
Part of AF/KL Group*	153 717	52,45%	152 265	51,63%	

* AIRFRANCE - AIRLINAIR - BRITAIR - HOP - KLM - REGIONAL - TRANSVIAFRANCE - TRANSVIAHOLLANDE

CDGS14 Start Of Season - Distribution by Airline



Slots distribution per alliance



ONEWORLD - Members Airlines (source : fr.oneworld.com 31 March 2014)

AIR BERLIN - AMERICAN AIRLINES - BRITISH AIRWAYS - CATHAY PACIFIC - FINNAIR - IBERIA - JAPAN AIRLINES -
LAN - MALAYSIA AIRLINES - QANTAS - QATAR AIRWAYS - ROYAL JORDANIAN - S7 AIRLINES - TAM

SKYTEAM - Members Airlines (source : www.skyteam.com 31 March 2014)

AEROFLOT - AEROLINEAS ARGENTINAS - AEROMEXICO - AIREUROPA - AIRFRANCE - ALITALIA - CHINA AIRLINES - CHINA EASTERN -
CHINA SOUTHERN - CZECH AIRLINES - DELTA - GARUDA - KENYA AIRWAYS - KLM - KOREAN AIR - MEA - SAUDIA -
TAROM - VIETNAM AIRLINES - XIAMENAIR

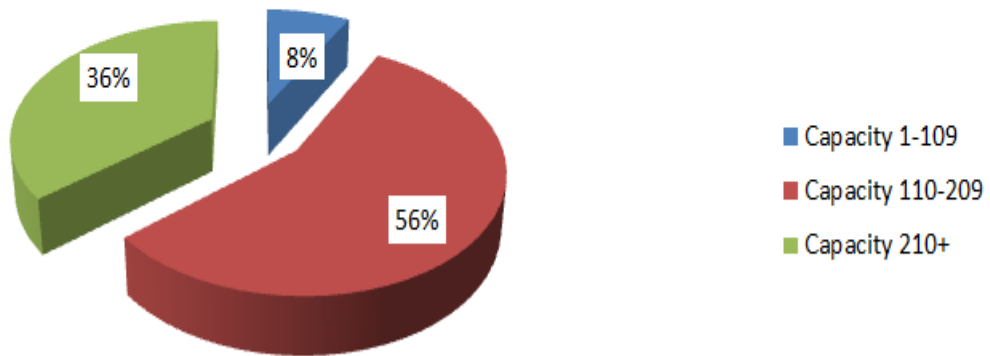
STAR ALLIANCE - Members Airlines (source : www.staralliance.com 31 March 2014)

ADRIA - AEGEAN - AIR CANADA - AIR CHINA - AIR NEW ZEALAND - ANA - ASIANA AIRLINES - AUSTRIAN - AVIANCA TACA
BRUSSELS AIRLINES - COPAAIRLINES - CROATIA AIRLINES - EGYPTAIR - ETHIOPIAN - EVA AIR
LOT POLISH AIRLINES - LUFTHANSA - SCANDINAVIAN AIRLINES - SHENZHEN AIRLINES - SINGAPORE AIRLINES - SOUTH AFRICAN AIRWAYS
SWISS - TAP PORTUGAL - THAI - TURKISH AIRLINES - UNITED

Size of aircraft

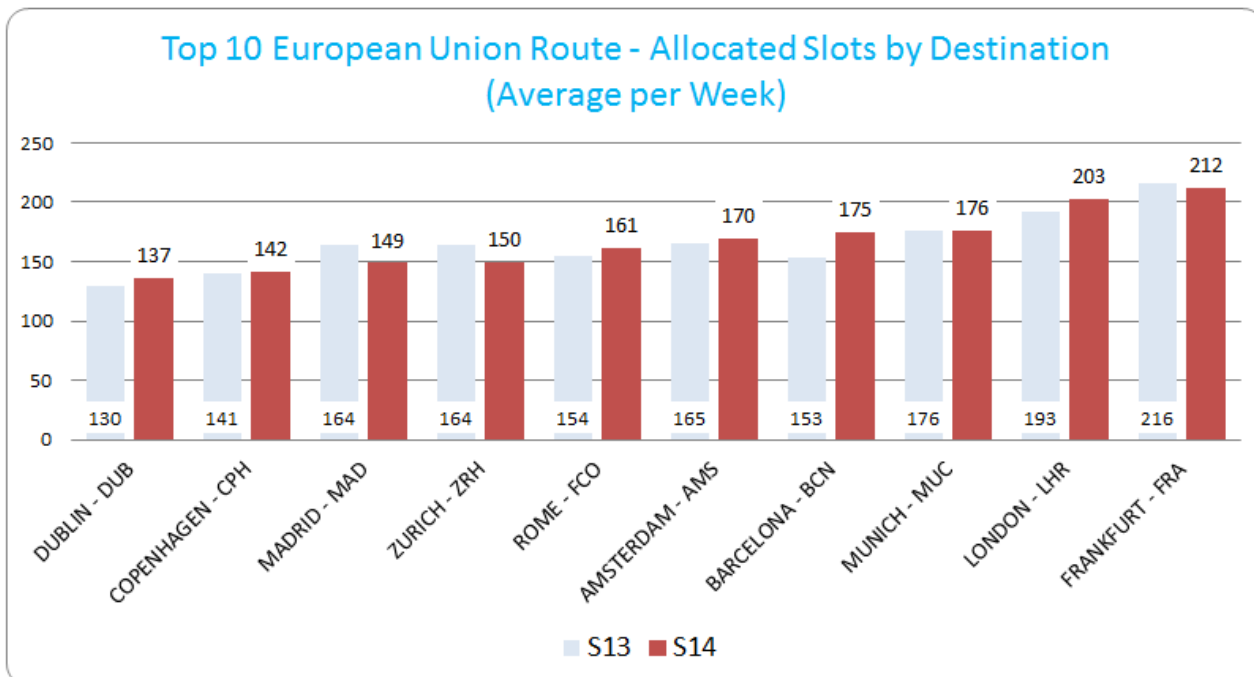
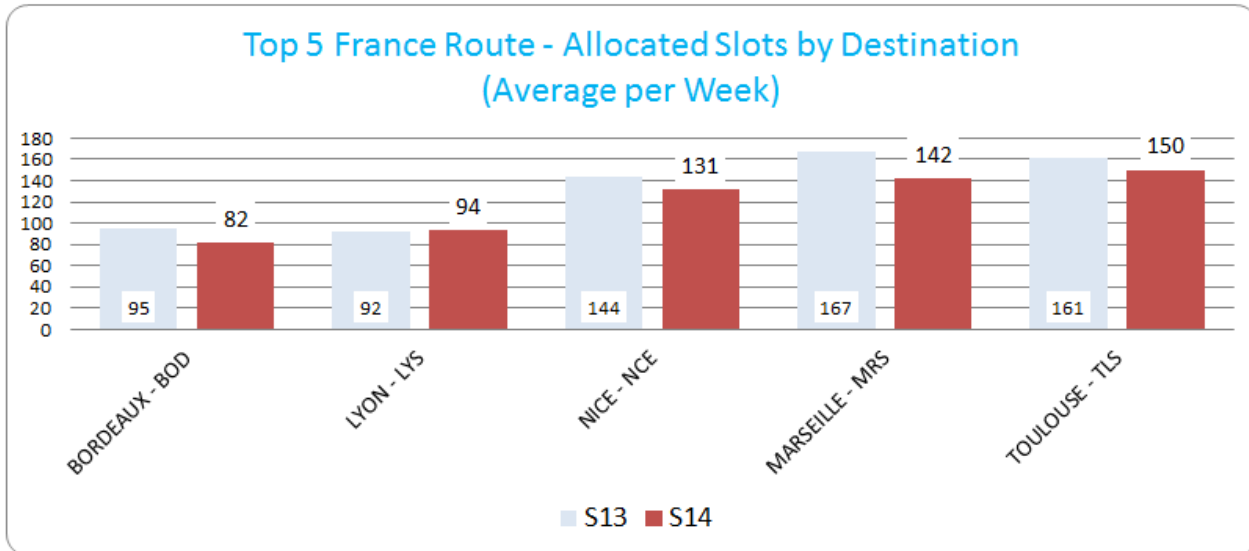
	S13	S14	Evolution
Average Size of Aircraft (Seats)	169	173	2%
Total Passenger Seat Offer	45 965 735	49 943 204	9%

CDGS14: Passenger Aircraft Size Distribution

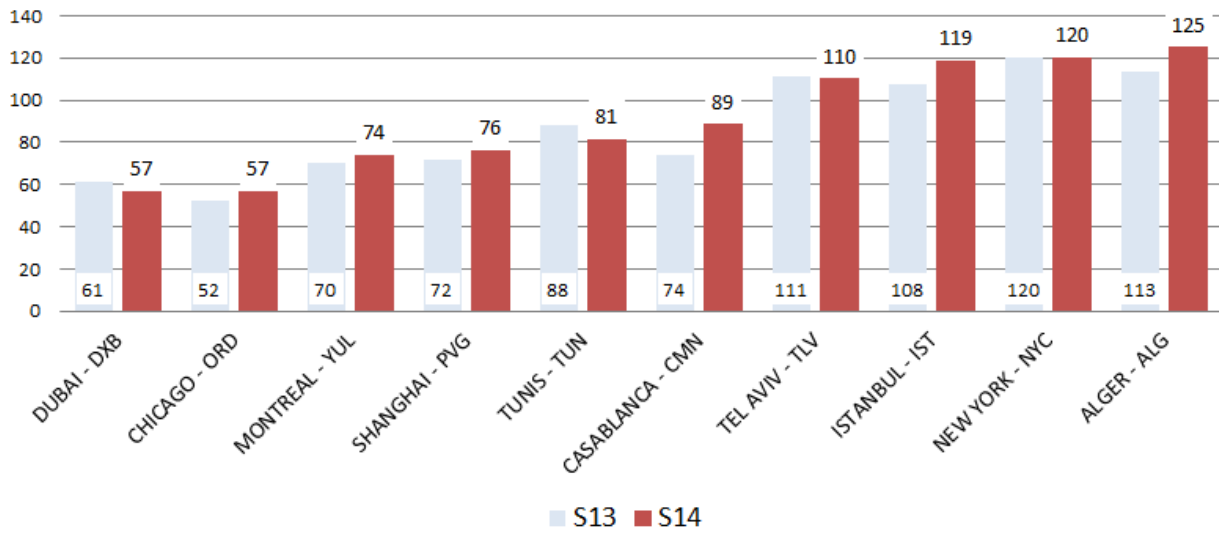


Allocated slots by destination

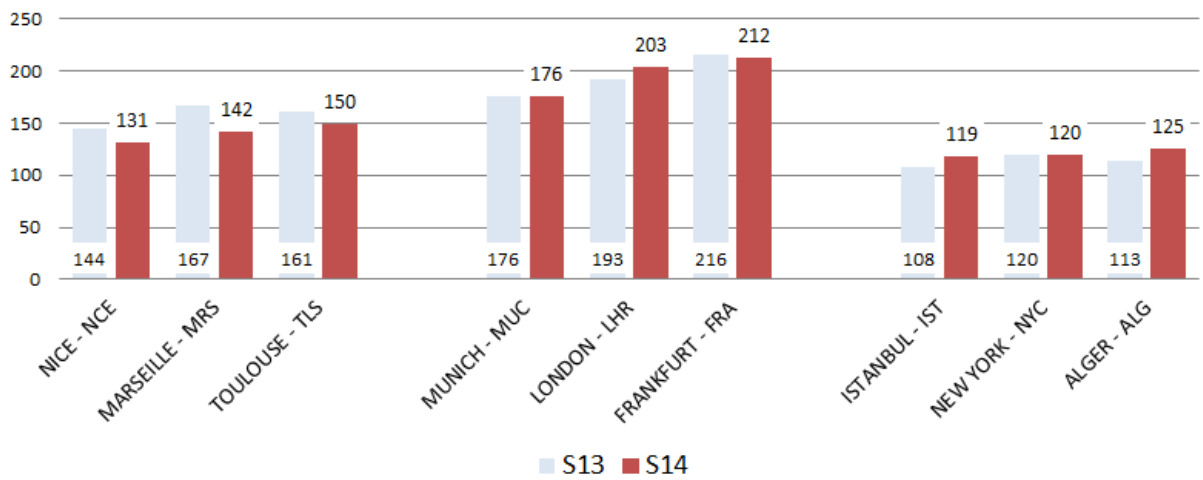
(CDGS14 vs CDGS13)



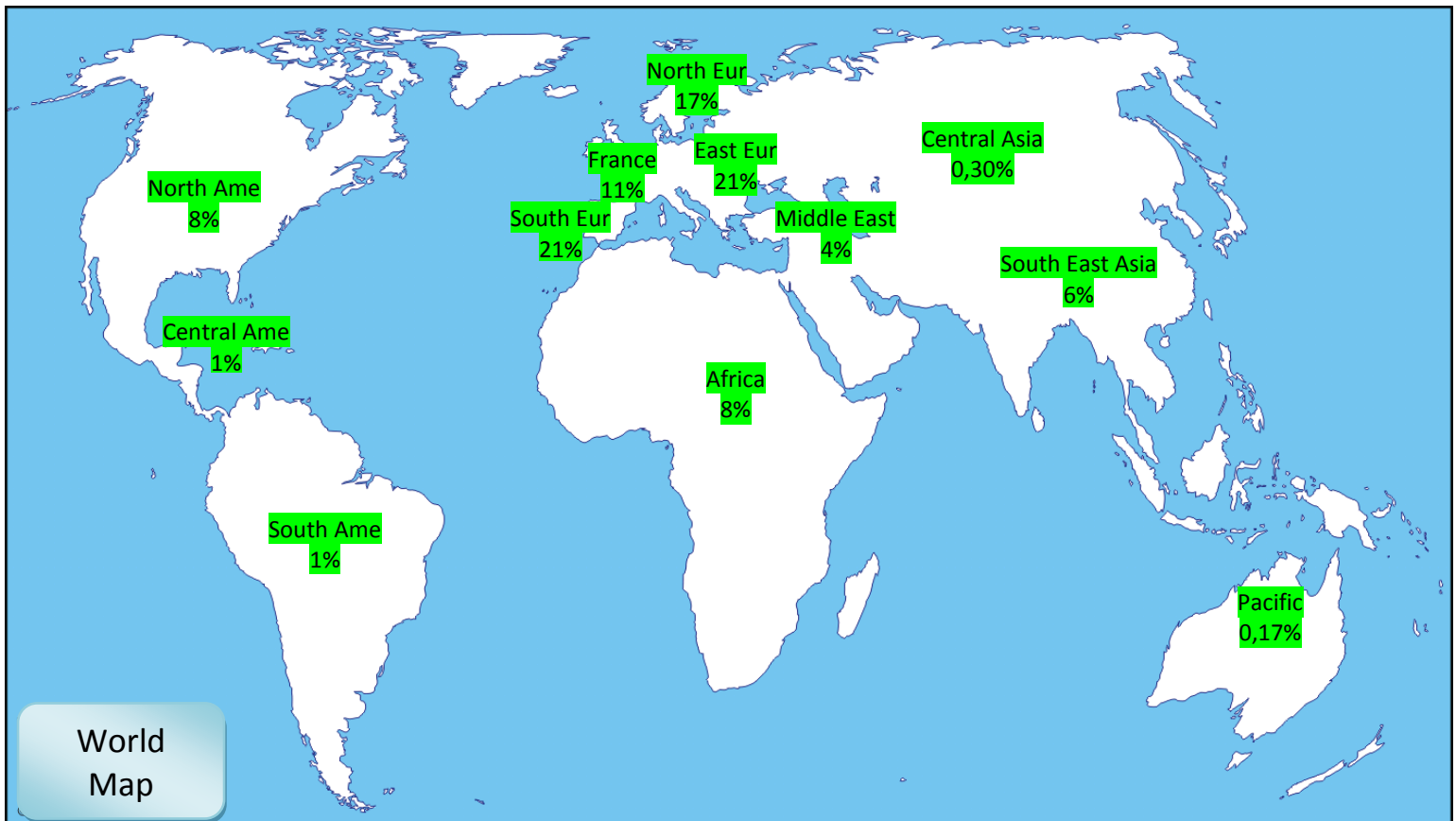
Top 10 International Route - Allocated Slots by Destination (Average per Week)



Comparison of first 3 destinations for each group Allocated Slots by Destination (Average per Week)



Geographical distribution of allocated slots



Slots distribution by service type

Service Type	S14	S13
Group Services for All Destinations	S14	S13
Regular Services	90,88%	89,42%
Freight Services	6,18%	7,22%
Charter Services	2,32%	2,89%
Technical Services	0,62%	0,46%
GA/BA Services	0,00%	0,00%
Special Services	0,00%	0,00%

CDG – S14 - Airport Coordination Parameters

ANNEXE 2

A compter de la saison aéronautique d'été 2014 :

HEURES LOCALES	ARRIVEES par 10 minutes	ARRIVEES par heure	DEPARTS par 10 minutes	DEPARTS par heure	TOTAL arrivées + départs par heure	HEURES LOCALES
0 h à 0 h 59	7	30	7	25	40	0 h à 0 h 59
1 h à 1 h 59	7	20	7	25	40	1 h à 1 h 59
2 h à 2 h 59	7	20	7	20	32	2 h à 2 h 59
3 h à 3 h 59	7	20	7	20	32	3 h à 3 h 59
4 h à 4 h 59	7	20	7	20	32	4 h à 4 h 59
5 h à 5 h 59	7	30	7	25	40	5 h à 5 h 59
6 h à 6 h 59	10 *	41	7	38	67	6 h à 6 h 59
7 h à 7 h 59	11	48	12	66	103	7 h à 7 h 59
8 h à 8 h 59	12	62	11,5	62	106	8 h à 8 h 59
9 h à 9 h 59	11,5	62	12,5	62	117	9 h à 9 h 59
10 h à 10 h 59	11,5	60	12	67	111	10 h à 10 h 59
11 h à 11 h 59	11,5	61	12	63	112	11 h à 11 h 59
12 h à 12 h 59	11,5	54	12	63	110	12 h à 12 h 59
13 h à 13 h 59	11,5	54	12,5	68	107	13 h à 13 h 59
14 h à 14 h 59	12	58	11,5	63	105	14 h à 14 h 59
15 h à 15 h 59	12	56	12	65	108	15 h à 15 h 59
16 h à 16 h 59	11	56	12	63	107	16 h à 16 h 59
17 h à 17 h 59	12	61	11,5	62	107	17 h à 17 h 59
18 h à 18 h 59	12	60	12	62	111	18 h à 18 h 59
19 h à 19 h 59	11,5	59	11,5	62	109	19 h à 19 h 59
20 h à 20 h 59	11,5	56	11,5	64	108	20 h à 20 h 59
21 h à 21 h 59	11,5	53	11,5	53	97	21 h à 21 h 59
22 h à 22 h 59	10	44	10	41	78	22 h à 22 h 59
23 h à 23 h 59	8	40	10	30	62	23 h à 23 h 59

- **Runway scheduling limits :**

- "10*" means that, during the corresponding hour, a maximum of 11 movements can be scheduled for one period of 10 minutes while a maximum of 10 movements can be scheduled for the five other periods of 10 minutes, provided that the other constraints in the corresponding hour are not exceeded.

" 11,5 " means that, during the corresponding hour, a maximum of 12 movements can be scheduled for three periods of 10 minutes while a maximum of 11 movements can be scheduled for the three other periods of 10 minutes, provided that the other constraints in the corresponding hour are not exceeded.

" 12 " means that, during the corresponding hour, a maximum of 13 movements can be scheduled for one period of 10 minutes while a maximum of 12 movements can be scheduled for the five other periods of 10 minutes, provided that the other constraints in the corresponding hour are not exceeded.

- **Terminal constraints :**

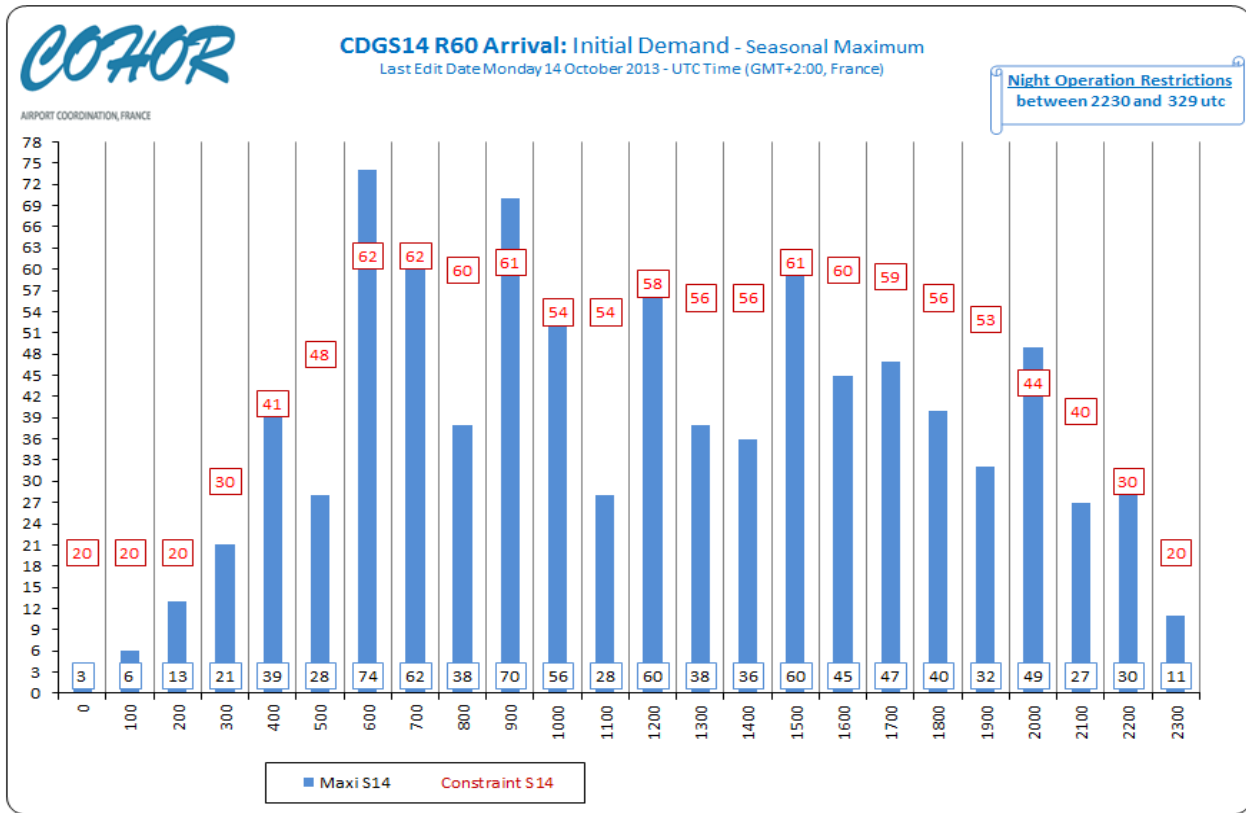
The maximum departing passenger flows per hour by terminal are :

Terminal 1 : 1950
Terminal 2A : 900
Terminal 2C : 900
Terminal 2D : 1200
Terminal 2F : 2800
Terminal 2G : 650
Terminal 3 : 1000

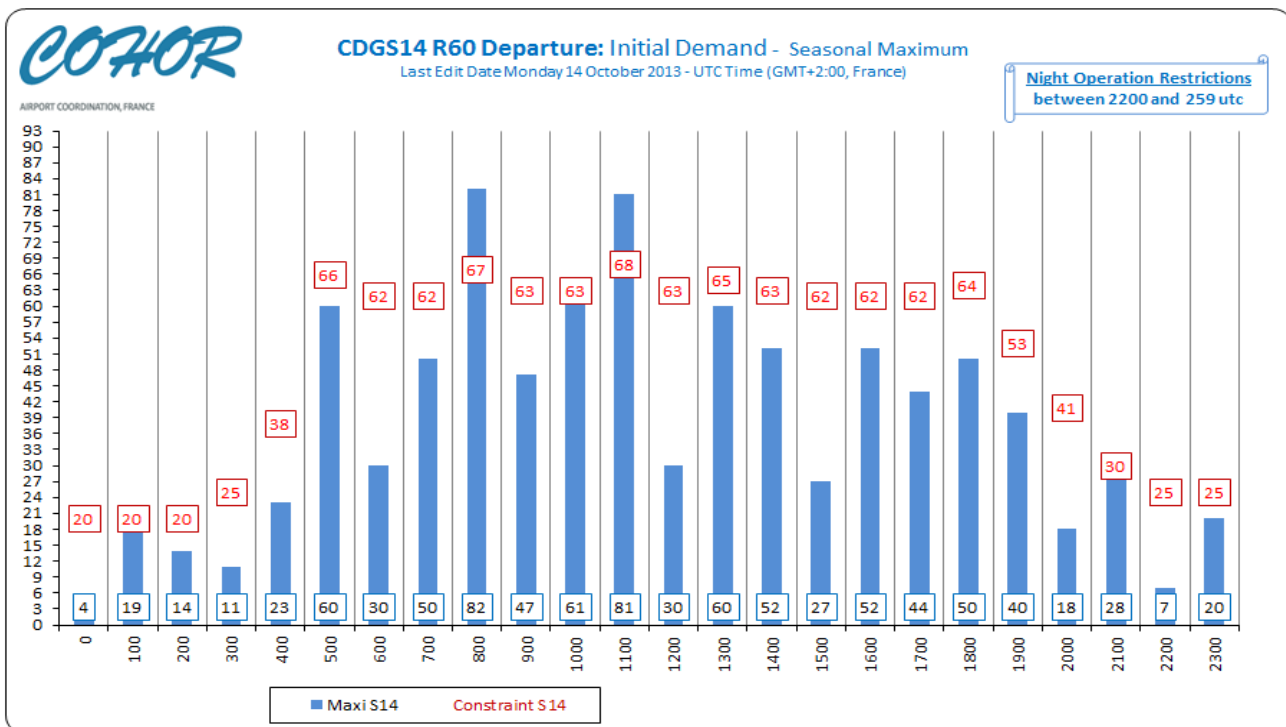
These constraints are implemented by COHOR to warn carriers of possible difficulties in CDG terminals. Cooperation between these carriers and Aéroports de Paris is required to find solutions.

Initial demand

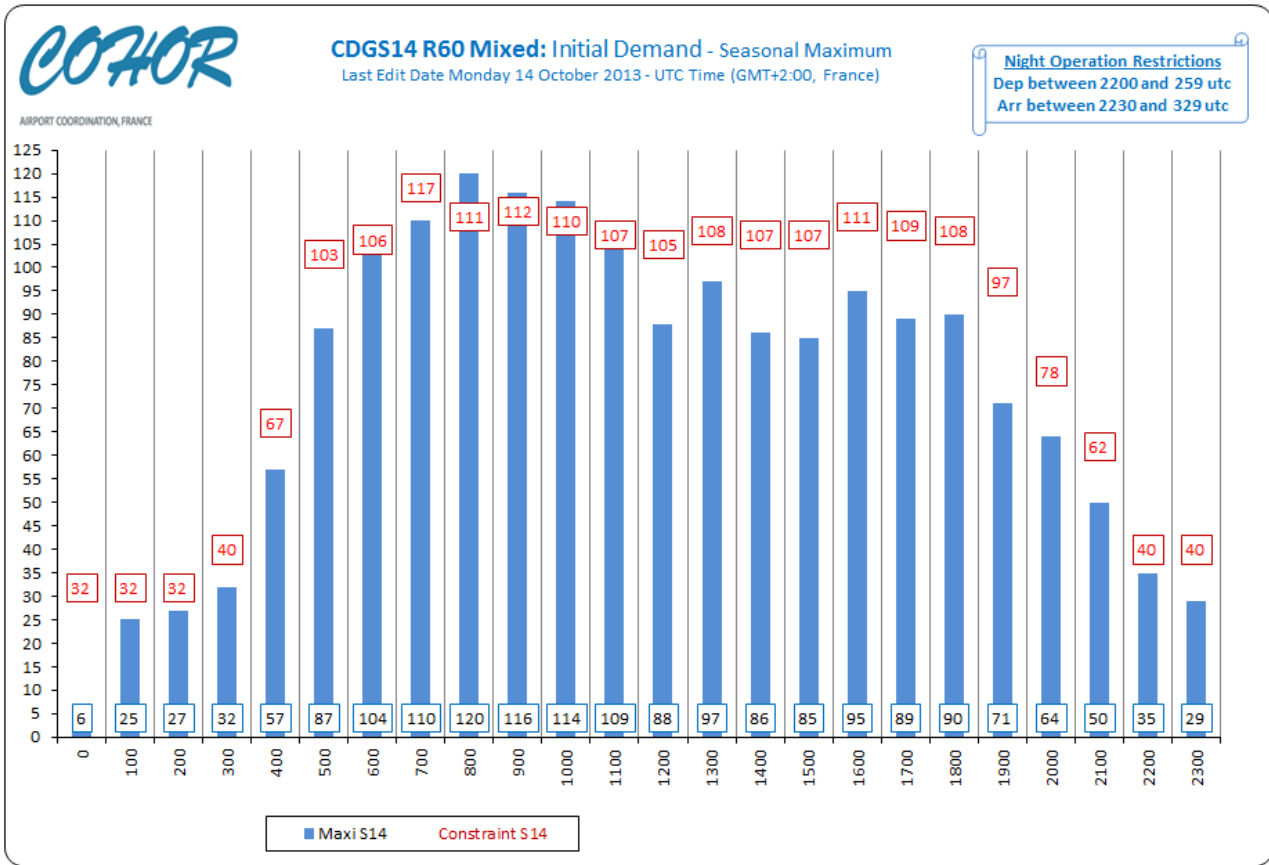
CDGS14 R60 Arrival



CDGS14 R60 Departure

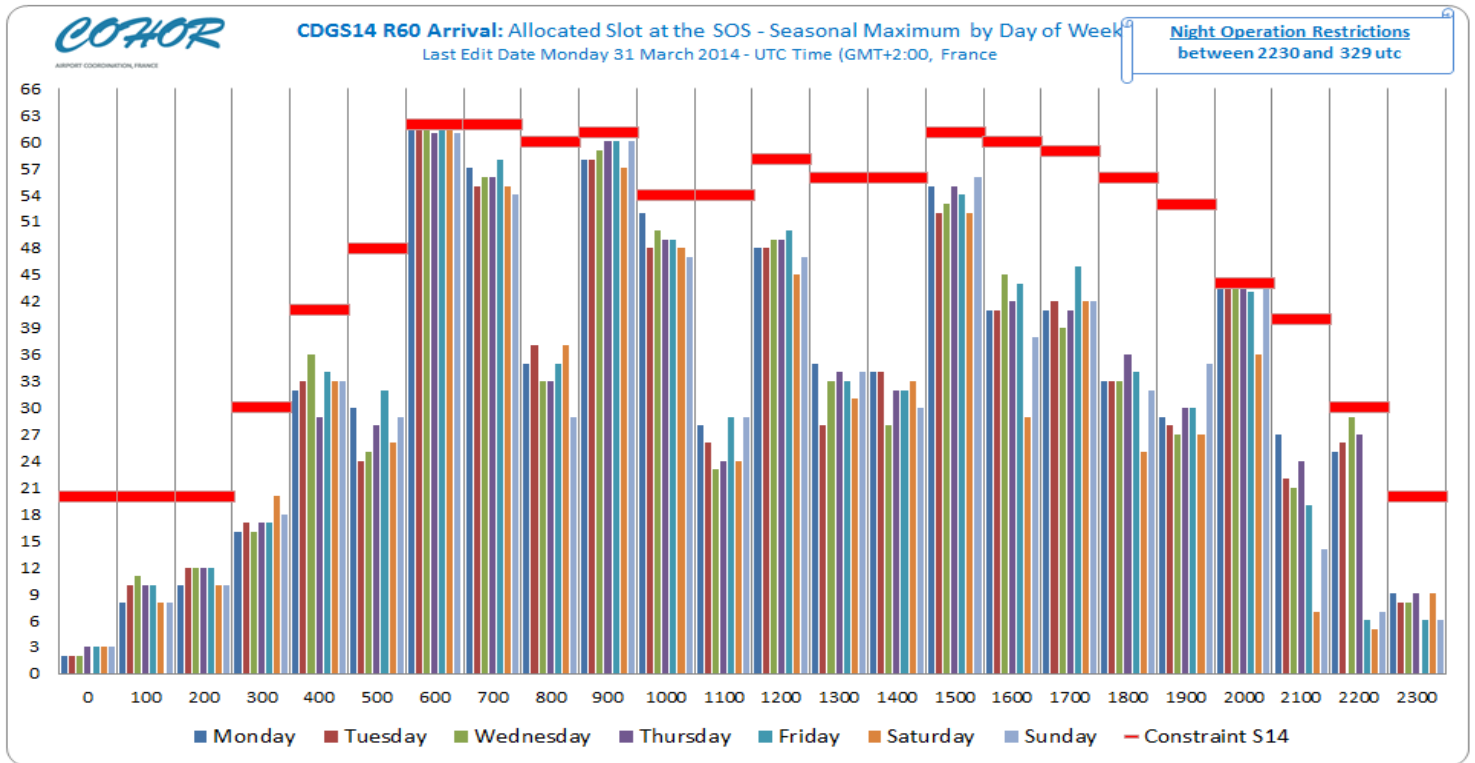


CDGS14 R60 Mixed

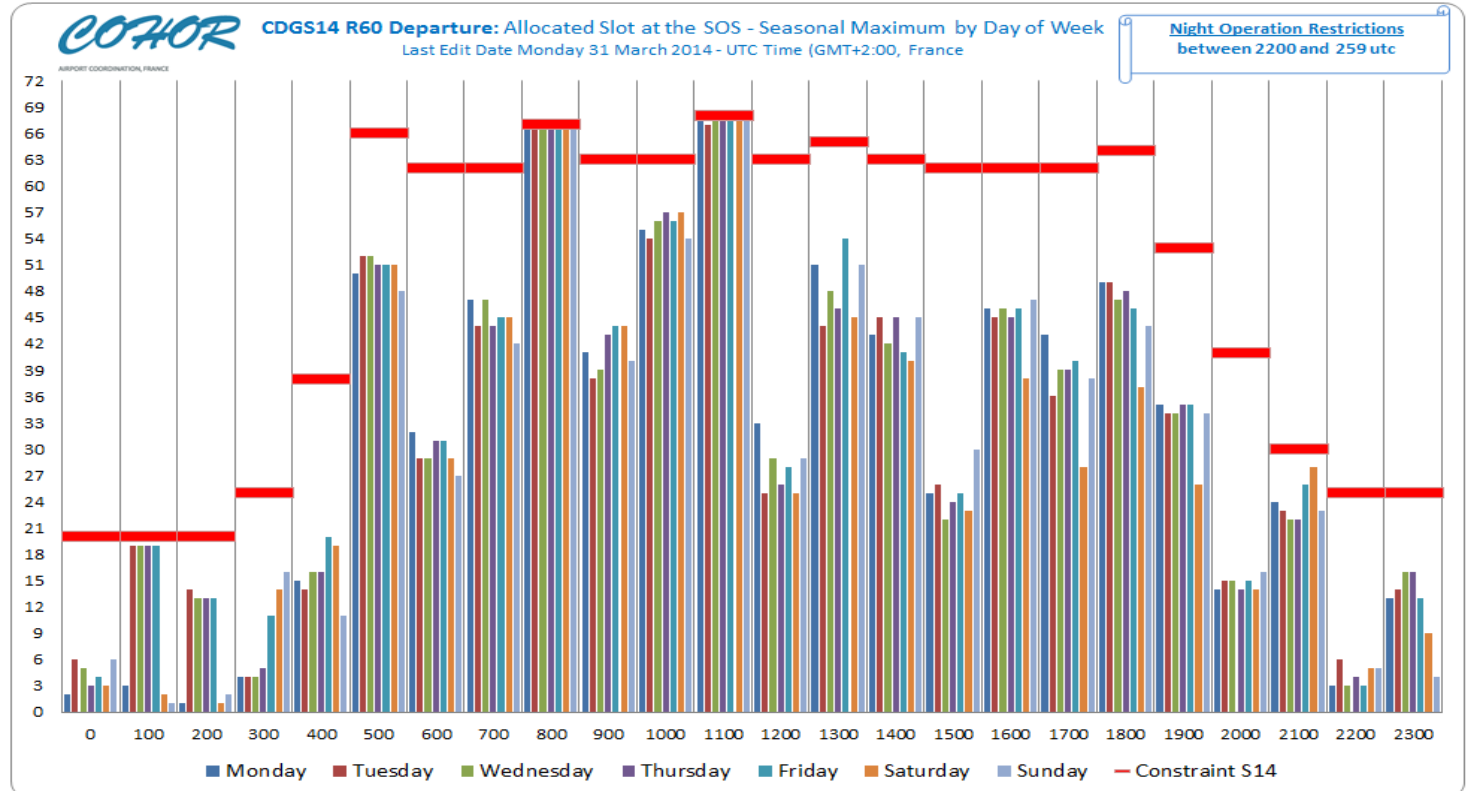


SOS Allocated slots

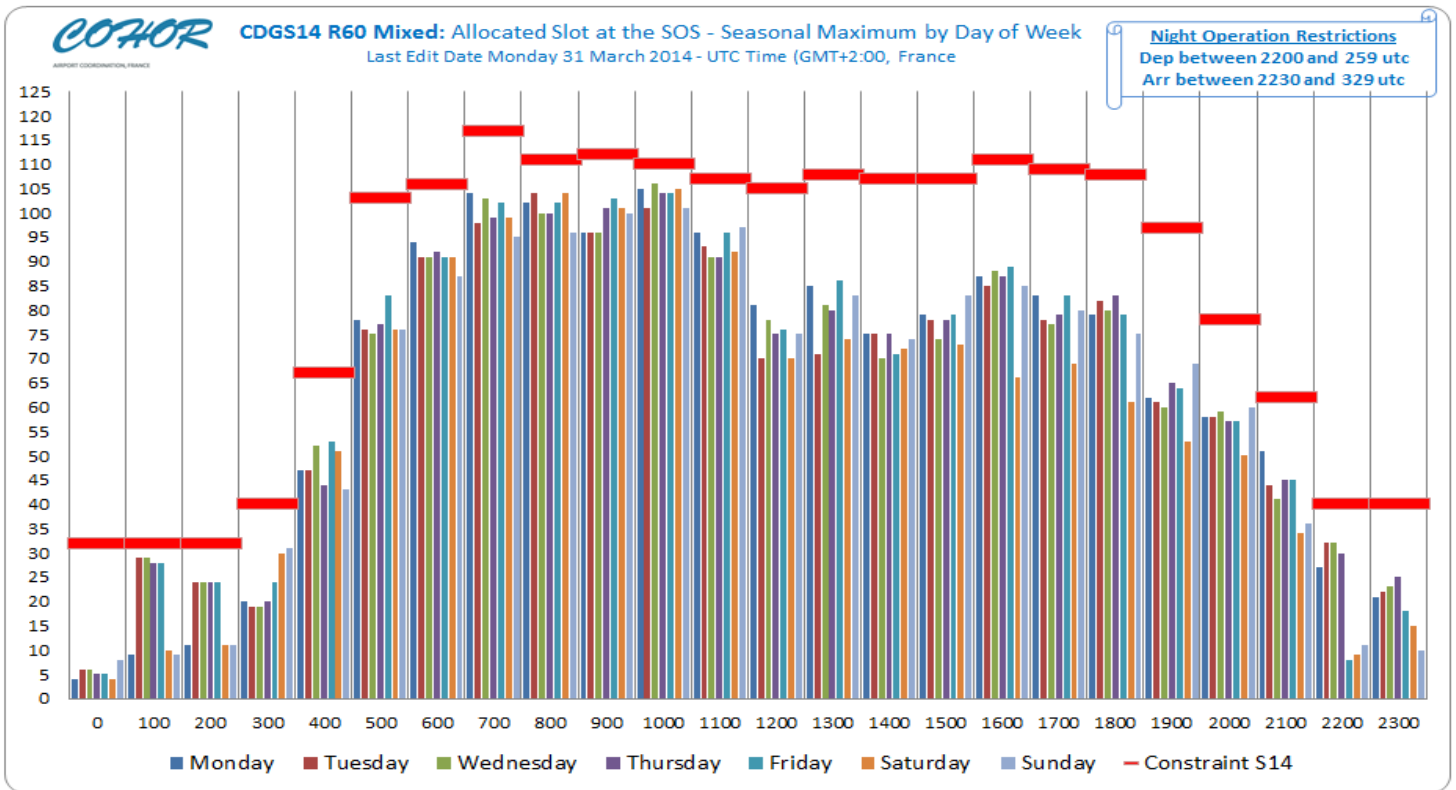
CDGS14 R60 Arrival



CDGS14 R60 Departure



CDGS14 R60 Mixed



Slots allocation by operator

AIRPORT	SEASON	Airline	Total Slot
CDG	S14	ADRIA AIRWAYS	424
CDG	S14	AEGEAN AIRLINES	1 788
CDG	S14	AER LINGUS	2 104
CDG	S14	AEROFLOT RUSSIAN AIRLINES	2 098
CDG	S14	AEROMEXICO	420
CDG	S14	AFRIQIYAH AIRWAYS	420
CDG	S14	AIGLE AZUR TRANSPORTS AERIENS	659
CDG	S14	AIR ALGERIE	2 000
CDG	S14	AIR ARMENIA	154
CDG	S14	AIR AUSTRAL	698
CDG	S14	AIR BALTIC	720
CDG	S14	AIR BERLIN	2
CDG	S14	AIR CAIRO	264
CDG	S14	AIR CANADA	840
CDG	S14	AIR CHINA	702
CDG	S14	AIR CONTRACTORS LTD	1
CDG	S14	AIR EUROPA	1 680
CDG	S14	AIR EXPLORE	4
CDG	S14	AIR FRANCE	149 715
CDG	S14	AIR FRANCE HANDLING	6
CDG	S14	AIR INDIA	420
CDG	S14	AIR LITUANICA	290
CDG	S14	AIR MADAGASCAR	216
CDG	S14	AIR MAURITIUS	498
CDG	S14	AIR MEDITERRANEE	1 999
CDG	S14	AIR NOSTRUM	12
CDG	S14	AIR ONE	508
CDG	S14	AIR SEYCHELLES	120
CDG	S14	AIR TAHITI NUI	322
CDG	S14	AIR TRANSAT	1 117
CDG	S14	AIRBRIDGE CARGO	180
CDG	S14	AirSERBIA	840
CDG	S14	AIRZENA GEORGIAN AIRLINES	120
CDG	S14	ALBA STAR	1
CDG	S14	ALITALIA	3 660
CDG	S14	ALL NIPPON AIRWAYS	840
CDG	S14	AIMasria Universal Airlines	4
CDG	S14	AMC AVIATION	118
CDG	S14	AMERICAN AIRLINES	2 237
CDG	S14	ARKIA ISRAELI AIRLINES	316
CDG	S14	ASIANA AIRLINES	294
CDG	S14	AUSTRIAN AIRLINES	1 260

AIRPORT	SEASON	Airline	Total Slot
CDG	S14	AZERBAIJAN AIRLINES	266
CDG	S14	BELAVIA BELARUSSIAN AIRLINES	402
CDG	S14	BH AIR	18
CDG	S14	BLUE AIR TRANSPORT AERIAN	4
CDG	S14	BLUEISLANDS	240
CDG	S14	BRITISH AIRWAYS	2 684
CDG	S14	BULGARIA AIR	48
CDG	S14	CAMAIR-CO	300
CDG	S14	CARGOLUX INTERNATIONAL S.A.	2
CDG	S14	CARPATAIR	10
CDG	S14	CATHAY PACIFIC	912
CDG	S14	CHINA CARGO AIRLINES	420
CDG	S14	CHINA EASTERN AIRLINES	770
CDG	S14	CHINA SOUTHERN AIRLINES	424
CDG	S14	CITYJET	22
CDG	S14	CODE ASSISTANT SWISSPORT	8
CDG	S14	CORENDON AIRLINES	66
CDG	S14	CORENDON DUTCH AIRLINES	10
CDG	S14	CORSAIR	105
CDG	S14	CROATIA AIRLINES	808
CDG	S14	CSA CZECH AIRLINES	1 200
CDG	S14	CYPRUS AIRWAYS	240
CDG	S14	DARWIN AIRLINES	420
CDG	S14	DELTA AIR LINES	4 423
CDG	S14	DENIM AIR	4
CDG	S14	EASTERN AIRWAYS LIMITED	2
CDG	S14	EASYJET AIRLINE	19 227
CDG	S14	ECAir - Equatorial Congo Airlines	378
CDG	S14	EGYPTAIR	660
CDG	S14	EL AL	1 487
CDG	S14	EMIRATES	1 200
CDG	S14	ENTER AIR	404
CDG	S14	ESTONIAN AIR	98
CDG	S14	ETHIOPIAN AIRLINES	732
CDG	S14	ETIHAD AIRWAYS	840
CDG	S14	EUROLOT	180
CDG	S14	EUROPE AIRPOST	4 872
CDG	S14	EUROPEAN AIR TRANSPORT	1 565
CDG	S14	EVA AIR	240
CDG	S14	FEDEX EXPRESS	9 680
CDG	S14	FINNAIR	2 128
CDG	S14	FLYBE	3 012
CDG	S14	FREE BIRD AIRLINES	18
CDG	S14	GERMANWINGS	1 326
CDG	S14	GULFAIR	420

AIRPORT	SEASON	Airline	Total Slot
CDG	S14	HERMES AIRLINES	169
CDG	S14	HIFLY AIRLINES	1
CDG	S14	HOP	26
CDG	S14	HUNNU AIR	48
CDG	S14	ICELANDAIR	826
CDG	S14	ISRAIR AIRLINES	16
CDG	S14	JAPAN AIRLINES	840
CDG	S14	JET AIRWAYS (INDIA) Private Limited	330
CDG	S14	JETAIRFLY	715
CDG	S14	JET2.COM	806
CDG	S14	KENYA AIRWAYS	169
CDG	S14	KLM	2 516
CDG	S14	KOREAN AIR	619
CDG	S14	KUWAIT AIRWAYS	281
CDG	S14	LIBYAN ARAB AIRLINES	180
CDG	S14	LOT POLISH AIRLINES	1 183
CDG	S14	LUFTHANSA	8 075
CDG	S14	LUXAIR	851
CDG	S14	MALAYSIA AIRLINES	420
CDG	S14	MALMO AVIATION	2
CDG	S14	MAURITANIA AIRLINES	154
CDG	S14	MERIDIANA FLY SPA	130
CDG	S14	MIDDLE EAST AIRLINES	840
CDG	S14	MNG AIRLINES	300
CDG	S14	MONARCH AIRLINES	2
CDG	S14	MONTENEGRO AIRLINES	408
CDG	S14	NEOS	20
CDG	S14	NEW LIVINGSTON SPA	8
CDG	S14	NIKI	726
CDG	S14	NOUVELAIR TUNISIE	1 100
CDG	S14	OMAN AIR	240
CDG	S14	ONUR AIR	832
CDG	S14	PAKISTAN INTERNATIONAL AIRLINES	180
CDG	S14	PEGASUS AIRLINES	6
CDG	S14	PRIMERA AIR	364
CDG	S14	PRIVATAIR	1
CDG	S14	QATAR AIRWAYS	1 376
CDG	S14	ROYAL AIR MAROC	60
CDG	S14	ROYAL JORDANIAN AIRLINES	420
CDG	S14	SAUDI ARABIAN AIRLINES	720
CDG	S14	SCANDINAVIAN AIRLINES	3 706
CDG	S14	SINGAPORE AIRLINES	420
CDG	S14	SN BRUSSELS AIRLINES	864
CDG	S14	SRILANKAN AIRLINES	240
CDG	S14	STAR AIR	597

AIRPORT	SEASON	Airline	Total Slot
CDG	S14	STEVE TEST TO KEEP	22
CDG	S14	SUNEXPRESS	62
CDG	S14	SWISS INTERNATIONAL AIRLINES	2 518
CDG	S14	SYPHAX AIRLINES	1 002
CDG	S14	TAM LINHAS AEREAS	422
CDG	S14	TAROM	820
CDG	S14	THAI AIRWAYS	406
CDG	S14	THOMAS COOK AIRLINES	2
CDG	S14	THOMAS COOK AIRLINES (BELGIUM)	56
CDG	S14	THOMSONFLY	4
CDG	S14	THY TURKISH AIRLINES	2 192
CDG	S14	TITAN AIRWAYS	3
CDG	S14	TNT AIRWAYS	900
CDG	S14	TRADE AIR	4
CDG	S14	TRANS AEREOS DE CABO VERDE	136
CDG	S14	TRANS MEDITERRANEAN AIRWAYS	120
CDG	S14	TRANSAVIA AIRLINES	10
CDG	S14	TRANSAVIA FRANCE	8
CDG	S14	TRAVEL SERVICE AIRLINES	1 663
CDG	S14	TRAVEL SERVICE POLSKA	1
CDG	S14	TUNISAIR	265
CDG	S14	TURKMENISTAN AIRLINES	102
CDG	S14	UKRAINE INTL AIRLINES	628
CDG	S14	UNITED AIRLINES	2 100
CDG	S14	UNITED PARCEL SERVICE	600
CDG	S14	URAL AIRLINES	10
CDG	S14	US AIRWAYS	830
CDG	S14	UZBEKISTAN AIRWAYS	120
CDG	S14	VIETNAM AIRLINES	578
CDG	S14	VOLOTEA SL	52
CDG	S14	VUELING AIRLINES	1 734
CDG	S14	WHITE AIRWAYS	278
CDG	S14	WOW Air	272
CDG	S14	XL AIRWAYS FRANCE	2 802
CDG	S14	YAKUTIA AIRLINES	6
CDG	S14	YEMENIA	72